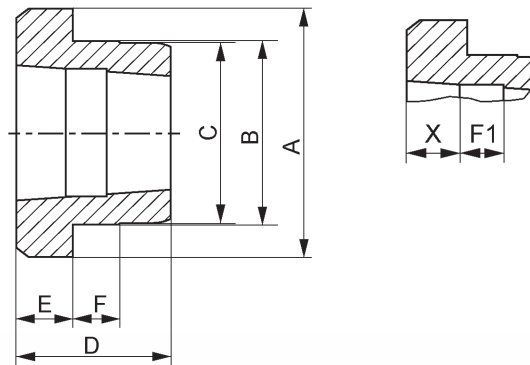


Weld-on Hub

Taper welded hubs are made of steel, drilled, countersunk and given a taper hole to enable them to be mounted with standard taper bushes. The protruding flange provides a convenient possibility of welding hubs in fans, fanwheels, steel disks, chain wheel pulleys and many other devices which have to be mounted permanently on a shaft. Welded hubs are simple to install and are ideally suitable where heavy-duty conditions are encountered. When the bolts are tightened, the hole is pressed together, thus fastening it on the shaft in the form of a press fit. The type of design eliminates all mounting difficulties, as well as preventing any loosening and migration on the hub during operation.



Type WM

Hub size	Bush No.	A	B	C	D	E	F	F1	X
		mm	mm	mm	mm	mm	mm	mm	mm
WM 12	1210	70	60	58	25	9	10	8	9
WM 16-1	1610	83	70	68	25	9	10	8	9
WM 16-2	1615	83	70	68	38	16	11	8	16
WM 20	2012	95	90	88	32	12	12	10	12
WM 25	2517	127	110	108	45	19	13	10	19
WM 30-2	3020	152	130	125	51	20	15	12	20
WM 30-3	3030	152	130	125	76	25	19	12	25
WM 35	3535	184	155	151	89	32	25	15	32
WM 40	4040	225	195	187	102	32	32	15	32
WM 45	4545	254	220	213	114	38	38	20	38
WM 50	5050	276	242	228	127	38	38	20	38

Type WH

Hub size	Bush No.	A	B	C	D	E	F	F1	X
		mm	mm	mm	mm	mm	mm	mm	mm
WH 12	1210	70	65	64,5	25	9	10	-	-
WH 16	1610	83	75	74,5	25	9	10	-	-
WH 20	2012	95	90	89,5	32	12	12	-	-
WH 25	2517	115	110	109,5	45	19	15	-	-
WH 30	3020	145	140	139,5	51	20	15	21	14
WH 35	3525	190	180	179,5	65	25	25	31	19
WH40	4040	200	190	189,5	102	32	30	27	22
WH45	4545	210	200	199,5	114	40	30	33	25
WH 50	5050	230	220	219,5	127	40	35	37	20