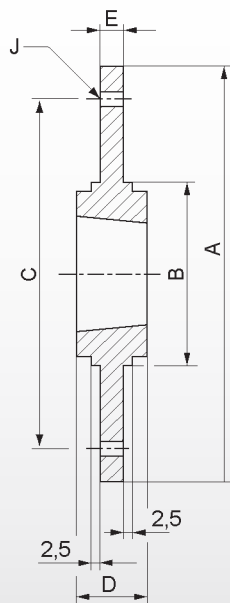


Bolt-on Hubs

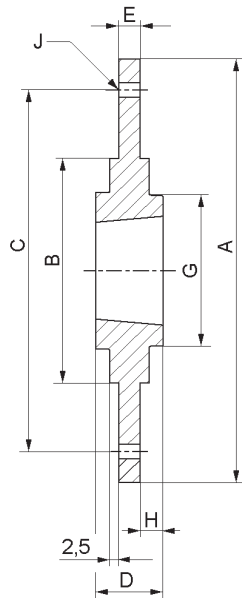
Taper screw-on hubs have been designed for use with taper bushes. They offer the favourable facility of mounting fans, fanwheels and other devices firmly on a shaft. DESCH screw-on hubs are made of grey cast iron or steel and are phosphatised to provide additional corrosion-proofing.



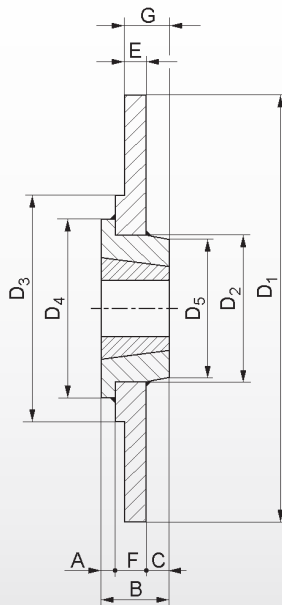
Type SM

Hub size	Bush No.	A	B	C	D	E	J
		mm	mm	mm	mm	mm	mm
SM 12	1210	180	90	135	25	6,5	6 x 7,5
SM 16-1	1610	200	110	150	25	7,5	6 x 7,5
SM 16-2	1615	200	110	150	38	7,5	6 x 7,5
SM 20	2012	270	140	190	32	8,5	6 x 9,5
SM 25	2517	340	170	240	45	9,5	8 x 11,5
SM 30-1	3020	430	220	300	51	13,5	8 x 13,5
SM 30-2	3020	485	250	340	51	13,5	8 x 13,5

Type BF



Hub size	Bush No.	A	B	C	D	E	G	H	J
		mm	mm	mm	mm	mm	mm	mm	mm
BF 12	1210	120	80	100	25	5,5	75	10	6 x 7,5
BF 16	1610	130	90	110	25	6,5	85	10	6 x 7,5
BF 20	2012	145	100	125	32	8,5	95	13	6 x 9,5
BF 25	2517	185	130	155	45	11,5	119	20	8 x 11,5
BF 30	3020	200	165	190	51	11,5	147	20	8 x 13,5



off steel

Hub Size	Bush No.	Welded Hub	Weight	A	B	C	D1	D2	D3	D4	D5	E	F	G
			kg	mm	mm	mm	mm	mm	mm	mm	mm	mm	mm	mm
SM 12S	1210	WM 12	2,0	9	25	5	180	60	90	70	58	9	12	14
SM 16-1S	1610	WM16-1	2,4	9	25	5	200	70	110	83	68	9	12	14
SM 16-2S	1615	WM 16-2	2,5	10	38	15	200	70	110	83	68	10	13	25
SM 20S	2517	WM 25	6,0	19	45	11	270	110	140	127	108	11	14	22
SM 25S	2517	WM 25	9,2	19	45	10	340	110	170	127	108	12	15	22
SM 30-1S	3030	WM 30-3	20,0	25	76	32	430	130	220	152	125	15	19	47
SM 30-2S	3030	WM 30-3	25,0	25	76	31	485	130	250	152	125	15	20	46