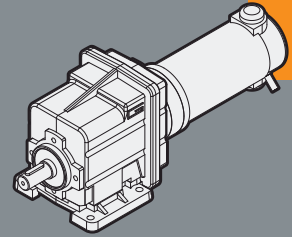


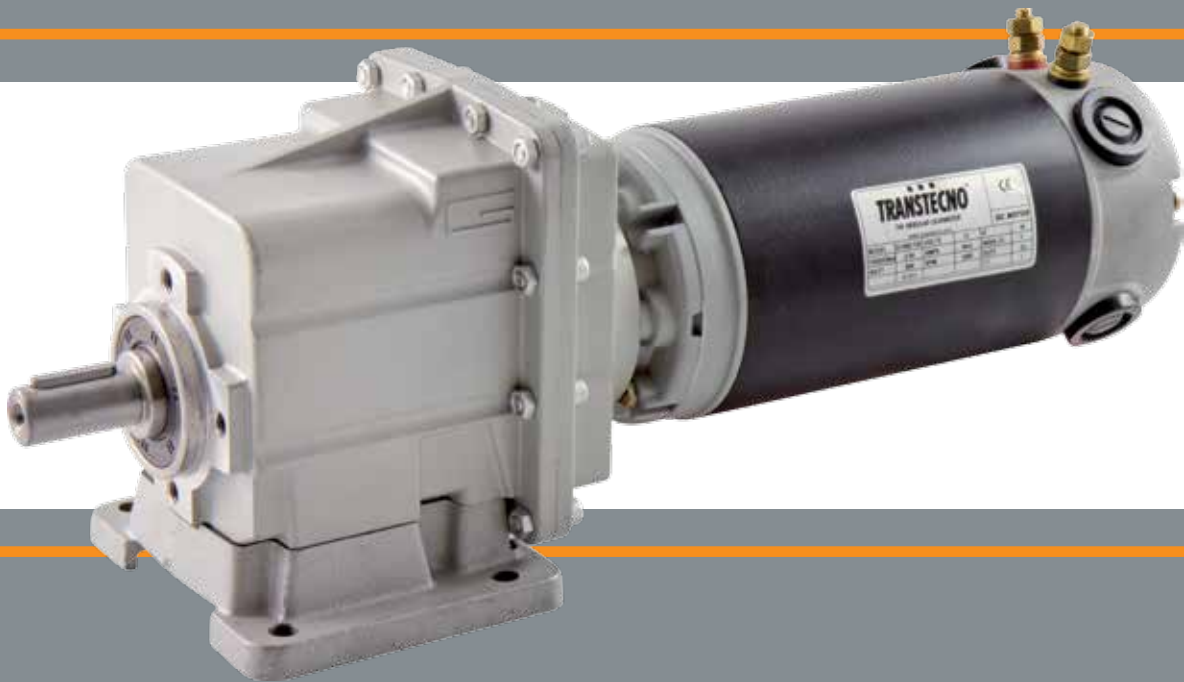
TRANSTECNO[®]
THE MODULAR GEARMOTOR

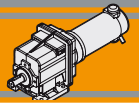
ECMG

ECMG



MOTORIDUTTORI C.C. AD INGRANAGGI CILINDRICI
PERMANENT MAGNETS D.C. HELICAL GEARMOTORS

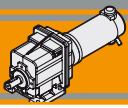




Indice	Index	Pag. Page
Caratteristiche tecniche	<i>Technical features</i>	L2
Designazione	<i>Classification</i>	L2
Sensi di rotazione	<i>Direction of rotation</i>	L3
Lubrificazione	<i>Lubrication</i>	L3
Simbologia	<i>Symbols</i>	L3
Carichi radiali	<i>Radial loads</i>	L4
Motori applicabili	<i>IEC Motor adapters</i>	L4
Dati tecnici per servizio S2	<i>Technical data for S2 duty</i>	L5
Dimensioni	<i>Dimensions</i>	L8

Questa sezione annulla e sostituisce ogni precedente edizione o revisione. Qualora questa sezione non Vi sia giunta in distribuzione controllata, l'aggiornamento dei dati ivi contenuto non è assicurato. **In tal caso la versione più aggiornata è disponibile sul nostro sito internet www.transtecno.com**

*This section replaces any previous edition and revision. If you obtained this catalogue other than through controlled distribution channels, the most up to date content is not guaranteed. **In this case the latest version is available on our web site www.transtecno.com***



Caratteristiche tecniche

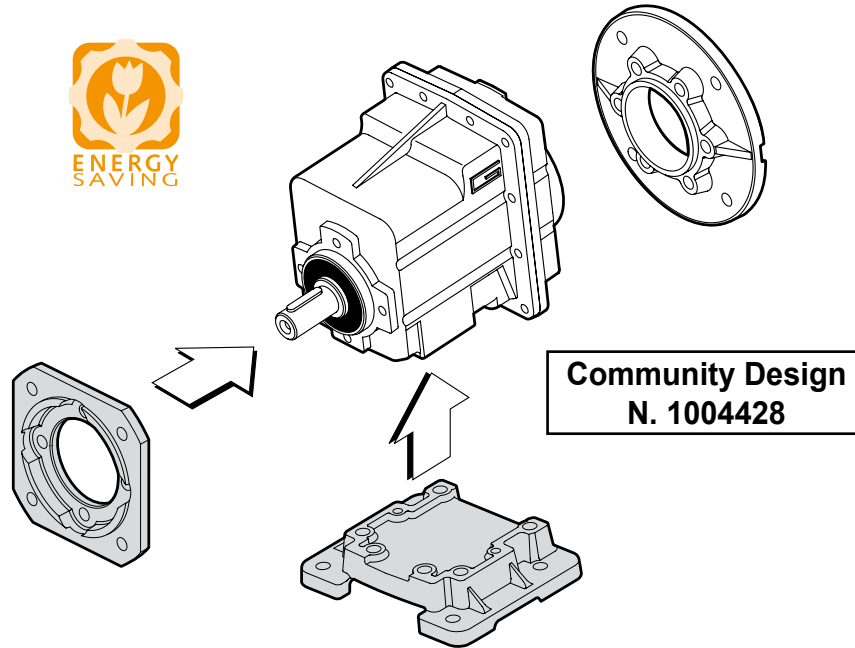
Technical features

Le caratteristiche principali dei motoriduttori a corrente continua della serie ECMG sono:

The main features of ECMG D.C. gearmotor range are:

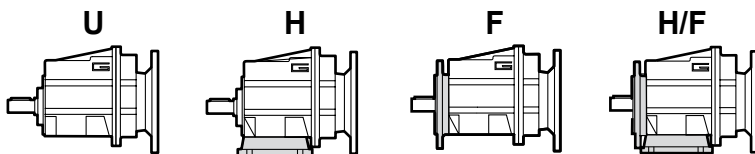
- Alimentazione in bassa tensione 12/24 Vcc
- Possibilità di montaggio encoder
- Potenze motore disponibili da 100 a 800W S2
- Magneti in ferrite
- Carcasse dei riduttori in pressofusione di alluminio
- Lubrificazione permanente con olio sintetico
- Ingranaggi sempre rettificati

- Low voltage power supply 12/24 Vdc
- Suitable for encoder assembly
- Motor power ratings available from 100 to 800W S2
- Ferrite magnets
- Die-cast aluminum housing
- Permanent synthetic oil long-life lubrication
- Ground helical gears

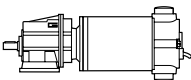


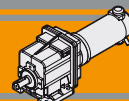
Designazione

Classification



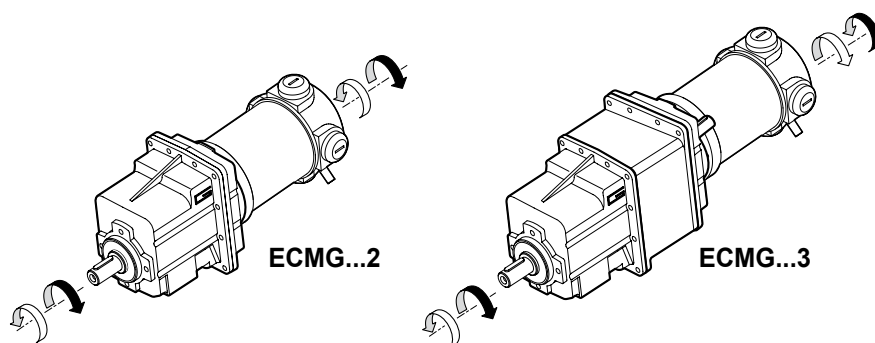
MOTORIDUTTORE / GEARBOX

ECMG	100/002						U	8.99	D20	240
Tipo Type	Grandezza Size						Versione Version	Rapporto Ratio	Albero uscita Output shaft	Versione motore Motor version
	070/002	100/002	180/002	250/002	350/002	600/002	U... H... F... H.../F...	vedi tabelle see tables	vedi tabelle see tables	120 240 24E
				250/012	350/012	600/012				
				250/013	350/013	600/013				
				250/022	350/022	600/022				
				250/023	350/023	600/023				
				250/033	350/033	600/033				
				250/043	350/043	600/043				



Sensi di rotazione

Direction of rotation



Lubrificazione

Lubrication

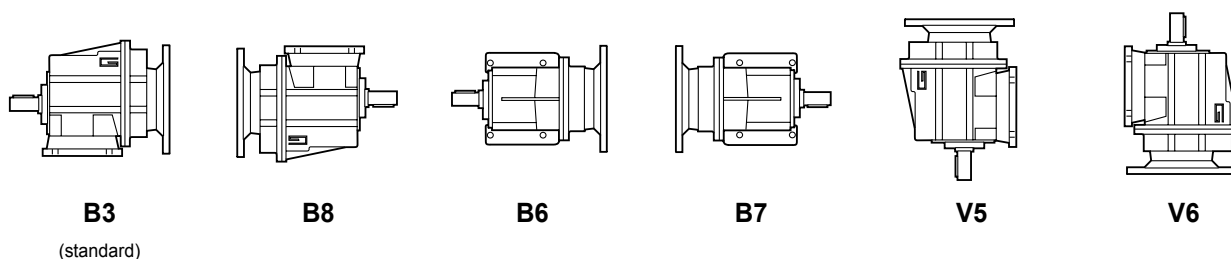
Tutti i riduttori nelle taglie 02 sono forniti completi di lubrificante sintetico viscosità 320, pertanto possono essere installati in qualunque posizione di montaggio e non necessitano di manutenzione.

Permanent synthetic oil long-life lubrication (viscosity grade 320) makes it possible to use sizes 02 in all mounting positions; for this reason they can be installed in any assembly position and do not require maintenance.

CMG	Quantità di olio (litri) / Oil quantity (litres)					
	B3	B8	B6	B7	V5	V6
002	0.18					
012	0.32					
013	0.94					
022	0.32					
023	0.94					
033	1.8					
043	1.8					

Lubrificati a vita
Life lubrication

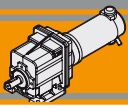
Posizioni di montaggio / Mounting positions



Simbologia

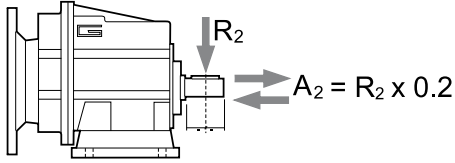
Symbols

- n_1 [min⁻¹] Velocità in ingresso / Input speed
- n_2 [min⁻¹] Velocità in uscita / Output speed
- i Rapporto di riduzione / Ratio
- P_1 [kW] Potenza in entrata / Input power
- M_2 [Nm] Coppia nominale in uscita in funzione di P_1 / Output torque referred to P_1
- sf Fattore di servizio / Service factor
- R_2 [N] Carico radiale ammissibile in uscita / Permitted output radial load
- A_2 [N] Carico assiale ammissibile in uscita / Permitted output axial load



Carichi radiali

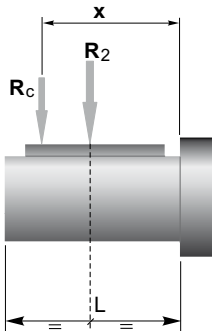
Radial loads



n_2 [min ⁻¹]	R_2 [N]				
	CMG 00	CMG 01	CMG 02	CMG 03	CMG 04
700	416	764	1529	1987	2379
600	437	805	1609	2092	2504
500	465	855	1710	2223	2661
400	501	921	1842	2395	2866
250	586	1077	2154	2801	3353
180	653	1323	2554	3321	3897
150	748	1406	2714	3529	4244
120	806	1631	3467	3801	4572
100	958	1842	3684	4507	5234
80	1032	1984	3969	5042	5991
60	1136	2184	4368	5549	6594
40	1300	2500	5000	6500	8000
10	1300	2500	5000	6500	8000

Quando il carico radiale risultante non è applicato sulla mezza-
ria dell'albero occorre calcolare quello effettivo con la seguente
formula:

When the resulting radial load is not applied on the centre line
of the shaft it is necessary to calculate the effective load with the
following formula:



	CMG 00	CMG 01	CMG 02	CMG 03	CMG 04
a	73	104	117	132	150
b	53	84	92	102	115
R_{2MAX}	1300	2500	5000	6500	8000

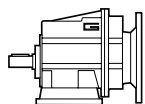
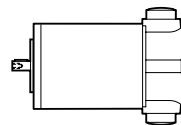
$$R_c = \frac{R_2 \cdot a}{(b+x)} \leq R_{2MAX}$$

$$R \leq R_c$$

*a, b = valori riportati nella tabella
a, b = values given in the table*

Motori applicabili

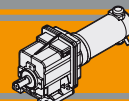
IEC Motor adapters



		EC						
		070.120 070.240	100.120 100.240 100.24E	180.120 180.240	180.24E	250.120 250.240	350.120 350.240	600.120 600.240
CMG	002	5.03 - 48.86	5.03 - 48.86	5.03 - 48.86	5.03 - 48.86	5.03 - 48.86	5.03 - 48.86	5.03 - 48.86
	012					3.82 - 53.33	3.82 - 53.33	3.82 - 53.33
	013					63.22 - 393.33	63.22 - 393.33	63.22 - 393.33
	022					3.66 - 54	3.66 - 54	3.66 - 54
	023					64.01 - 398.25	64.01 - 398.25	64.01 - 398.25
	033					72.83 - 378.64	72.83 - 378.64	72.83 - 378.64
	043					72.83 - 378.64	72.83 - 378.64	72.83 - 378.64

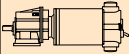
5.03 - 48.86

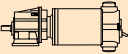
Rapporti di riduzione *i*
Ratio *i*



Dati tecnici per servizio S2

Technical data for S2 duty

P ₁ [W]	n ₂ [min ⁻¹]	M ₂ [Nm]	sf	i		Versione motore Motor version
-----------------------	--	------------------------	----	---	---	----------------------------------

P ₁ [W]	n ₂ [min ⁻¹]	M ₂ [Nm]	sf	i		Versione motore Motor version
-----------------------	--	------------------------	----	---	---	----------------------------------

100

(3000 min ⁻¹)	596	1.5	20.2	5.03	070/002	120/240
	492	1.9	16.6	6.10		
	401	2.3	13.5	7.49		
	334	2.7	14.2	8.99		
	295	3.1	12.6	10.16		
	249	3.7	10.6	12.07		
	224	4.1	13.4	13.40		
	198	5	11.9	15.14		
	165	6	9.9	18.17		
	139	6.6	8.3	21.58		
	128	7.2	7.7	23.51		
	120	7.7	7.2	25.10		
	111	8.3	6.6	27.08		
	92	9.9	5.5	32.49		
	71	12.8	4.3	42.04		
	67	13.7	4.0	44.89		
	61	14.9	3.7	48.86		

350

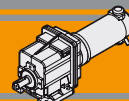
(3000 min ⁻¹)	596	5	5.8	5.03	250/002	120/240
	492	7	4.8	6.10		
	401	8	3.9	7.49		
	334	10	4.1	8.99		
	295	11	3.6	10.16		
	249	13	3.0	12.07		
	224	14	3.8	13.40		
	198	16	3.4	15.14		
	165	19	2.8	18.17		
	139	23	2.4	21.58		
	128	25	2.2	23.51		
	120	27	2.0	25.10		
	111	29	1.9	27.08		
	92	35	1.6	32.49		
	71	45	1.2	42.04		
	67	48	1.1	44.89		
	61	52	1.1	48.86		
	327	10	6.3	9.17	250/012	120/240
	306	10	5.9	9.81		
	261	12	6.3	11.50		
	252	13	6.1	11.90		
	217	15	6.4	13.80		
	205	16	6.0	14.62		
	168	19	4.9	17.86		
	157	20	4.6	19.07		
	151	21	4.4	19.83		
	127	25	3.7	23.56		
	101	32	3.0	29.56		
	85	38	2.5	35.47		
	65	49	1.9	45.89		
	61	52	1.8	49.00		
	56	57	1.6	53.33		
	47	66	1.4	63.22	250/013	120/240
	40	79	1.2	75.08		
	34	93	1.0	89.17		
	27	118	0.8	113.05		
	22	141	0.7	134.27		
	17	134	0.7	173.72		
	15	134	0.7	202.16		
	11	134	0.7	261.57		
	10	134	0.7	304.00		
	8	134	0.7	393.33		
	126	26	6.1	23.85	250/022	120/240
	100	32	4.9	29.93		
	84	38	4.1	35.91		
	65	50	3.1	46.46		
	60	53	2.9	49.61		
	56	58	2.7	54.00		

140

(3000 min ⁻¹)	596	2	14.4	5.03	100/002	120/240/24E
	492	3	11.9	6.10		
	401	3	9.7	7.49		
	334	4	10.1	8.99		
	295	4.3	9.0	10.16		
	249	5.2	7.6	12.07		
	224	5.7	9.6	13.40		
	198	6.5	8.5	15.14		
	165	7.8	7.1	18.17		
	139	9	6.0	21.58		
	128	10	5.5	23.51		
	120	11	5.1	25.10		
	111	12	4.7	27.08		
	92	13.9	4.0	32.49		
	71	18.0	3.1	42.04		
	67	19.2	2.9	44.89		
	61	21	2.6	48.86		

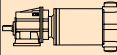
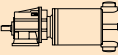
250

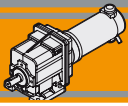
(3000 min ⁻¹)	596	4	8.1	5.03	180/002	120/240/24E
	492	5	6.7	6.10		
	401	6	5.4	7.49		
	334	7	5.7	8.99		
	295	8	5.0	10.16		
	249	9	4.2	12.07		
	224	10	5.4	13.40		
	198	12	4.8	15.14		
	165	13.9	4.0	18.17		
	139	16.5	3.3	21.58		
	128	18.0	3.1	23.51		
	120	19	2.9	25.10		
	111	21	2.7	27.08		
	92	25	2.2	32.49		
	71	32	1.7	42.04		
	67	34	1.6	44.89		
	61	37	1.5	48.86		



Dati tecnici per servizio S2

Technical data for S2 duty

P_1 [W]	n_2 [min ⁻¹]	M_2 [Nm]	sf	i		Versione motore Motor version	P_1 [W]	n_2 [min ⁻¹]	M_2 [Nm]	sf	i		Versione motore Motor version					
800							800											
(3000 min ⁻¹)	596	12	2.5	5.03	600/002	120/240	(3000 min ⁻¹)	302	24	3.9	9.93	600/022	120/240					
	492	15	2.1	6.10					272	27	5.8			11.01				
	401	18	1.7	7.49					249	29	5.3			12.05				
	334	22	1.8	8.99					227	32	4.8			13.21				
	295	25	1.6	10.16					203	36	4.3			14.81				
	249	30	1.3	12.07					175	42	3.0			17.1				
	224	33	1.7	13.40					164	45	2.8			18.26				
	198	37	1.5	15.14					149	49	3.2			20.08				
	165	44	1.2	18.17					126	58	2.7			23.85				
	139	53	1.0	21.58					100	73	2.1			29.93				
	128	57	1.0	23.51					84	88	1.8			35.91				
	120	61	0.9	25.10					65	114	1.4			46.46				
	111	66	0.8	27.08					60	121	1.3			49.61				
	92	79	0.7	32.49					56	132	1.2			54				
	71	79	0.7	42.04					47	153	1.0			64.01	600/023	120/240		
	67	79	0.7	44.89					39	182	0.9			76.02				
	61	79	0.7	48.86					33	216	0.7			90.29				
	785	9	5.0	3.82			600/012	120/240	26	223	0.7			114.46				
	648	11	4.2	4.63					22	223	0.7	135.95						
	527	14	3.4	5.69					17	223	0.7	175.89						
	389	19	3.3	7.72					15	223	0.7	204.69						
	327	22	2.8	9.17					11	223	0.7	264.84						
	306	24	2.6	9.81					10	223	0.7	307.80						
	261	28	2.8	11.5					8	223	0.7	398.25						
	252	29	2.7	11.9					41	174	1.3	72.83	600/033	120/240				
	217	34	2.8	13.8					31	233	1.0	97.45						
	205	36	2.6	14.62					26	277	0.8	115.74						
	168	44	2.2	17.86					21	334	0.7	140.81						
	157	47	2.0	19.07					17	334	0.7	174.26						
	151	48	1.9	19.83					13	334	0.7	225.47						
	127	58	1.6	23.56					11	334	0.7	262.05						
	101	72	1.3	29.56					9	334	0.7	325.79						
	85	87	1.1	35.47					8	334	0.7	378.64						
	65	112	0.8	45.89					41	174	2.2	72.83			600/043	120/240		
	61	120	0.8	49					31	233	1.7	97.45						
	56	130	0.7	53.33			26	277	1.4	115.74								
	47	134	0.7	63.22	600/013	120/240	21	337	1.2	140.81								
	40	134	0.7	75.08					17	417	0.9	174.26						
	34	134	0.7	89.17					13	540	0.7	225.47						
	27	134	0.7	113.05					11	557	0.7	262.05						
	22	134	0.7	134.27					9	557	0.7	325.79						
	17	134	0.7	173.72					8	557	0.7	378.64						
	15	134	0.7	202.16														
	11	134	0.7	261.57														
	10	134	0.7	304.00														
	8	134	0.7	393.33														

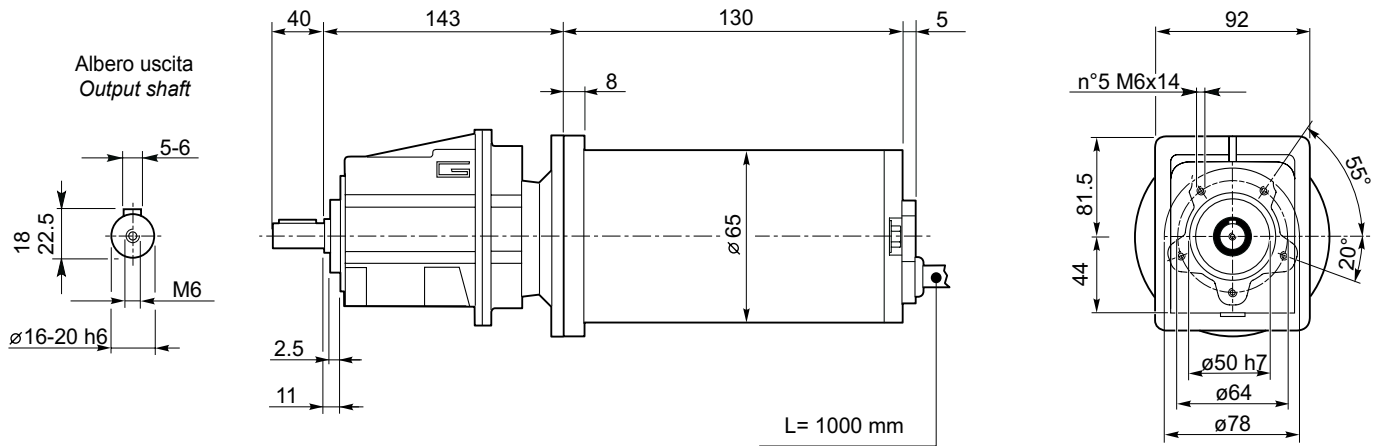


Dimensioni

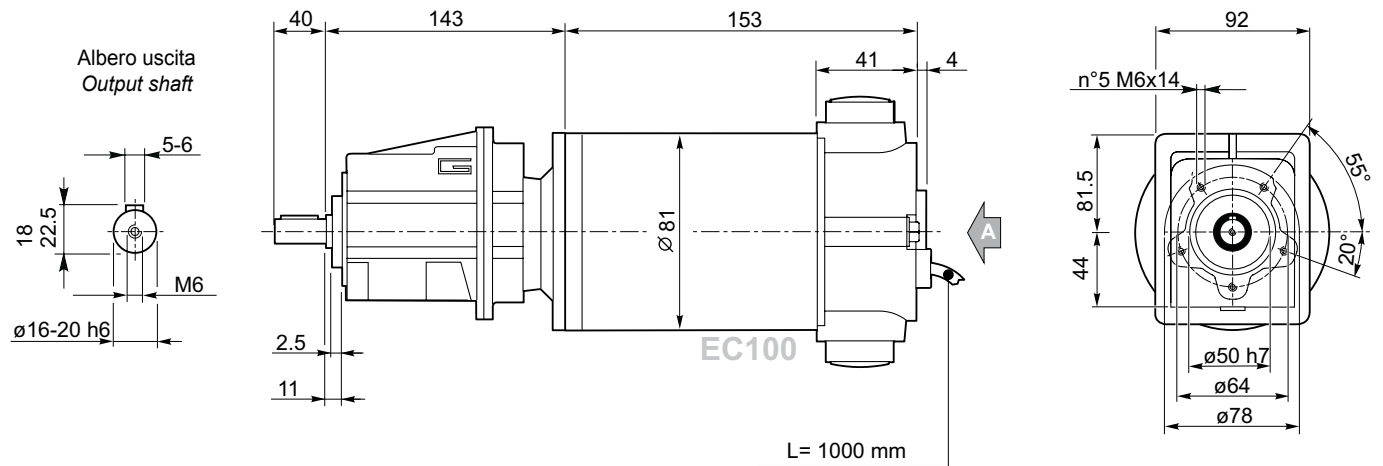
Dimensions

ECMG..U

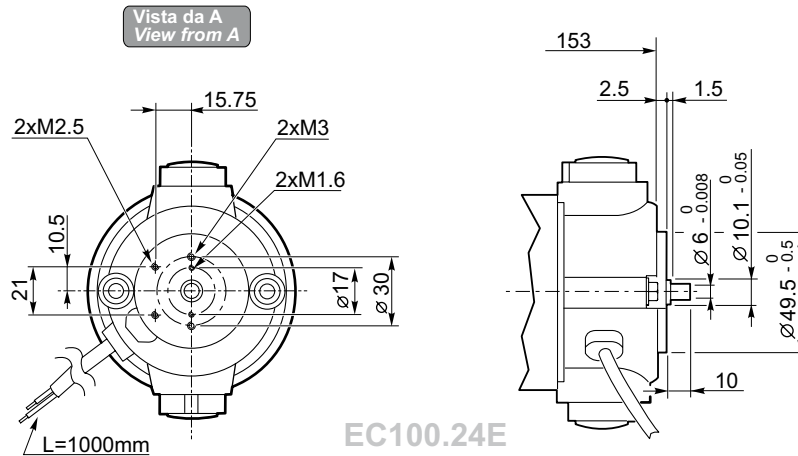
ECMG070/002 U

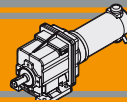


ECMG100/002 U



Vista da A
View from A



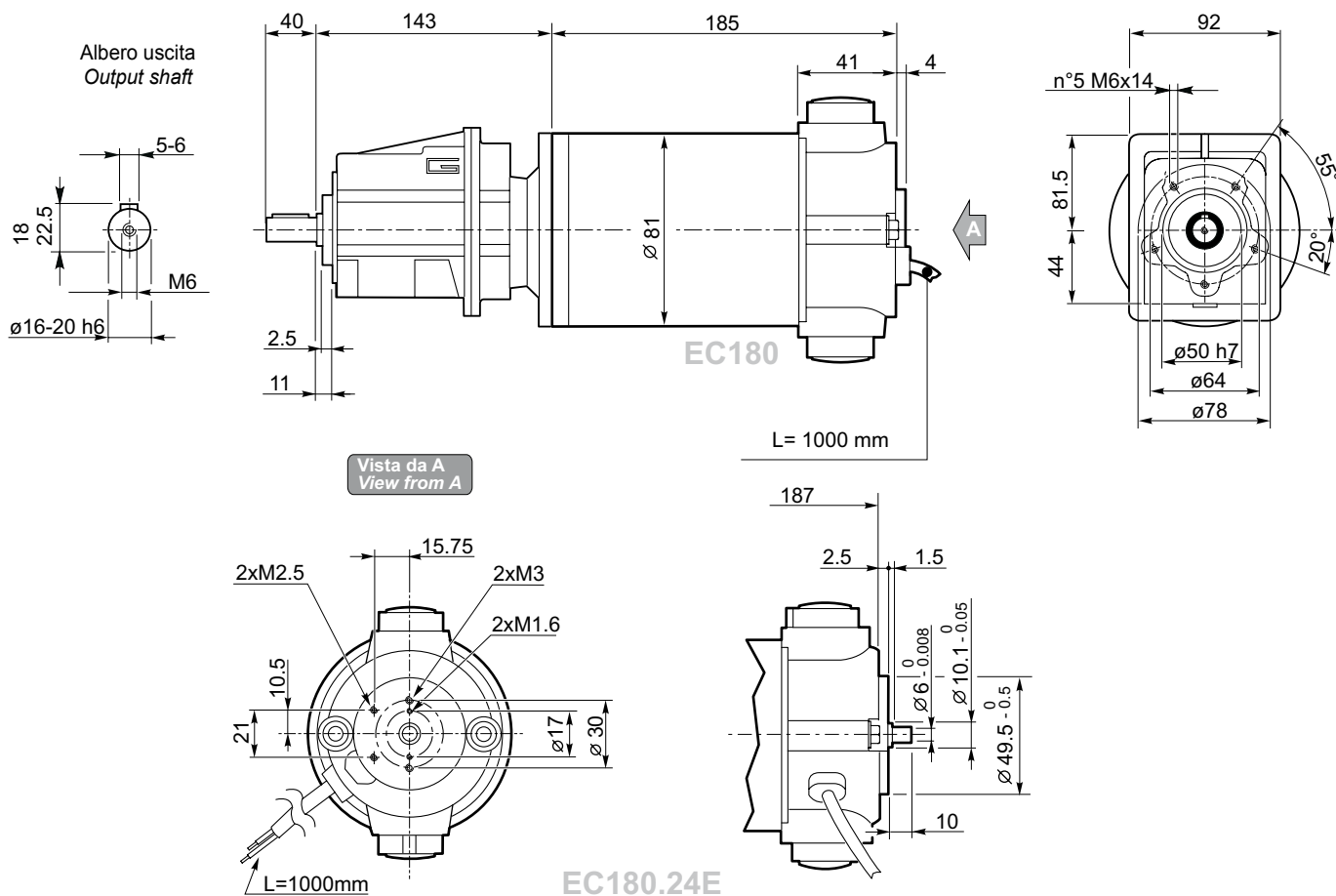


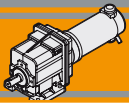
Dimensioni

Dimensions

ECMG..U

ECMG180/002 U





ECMG

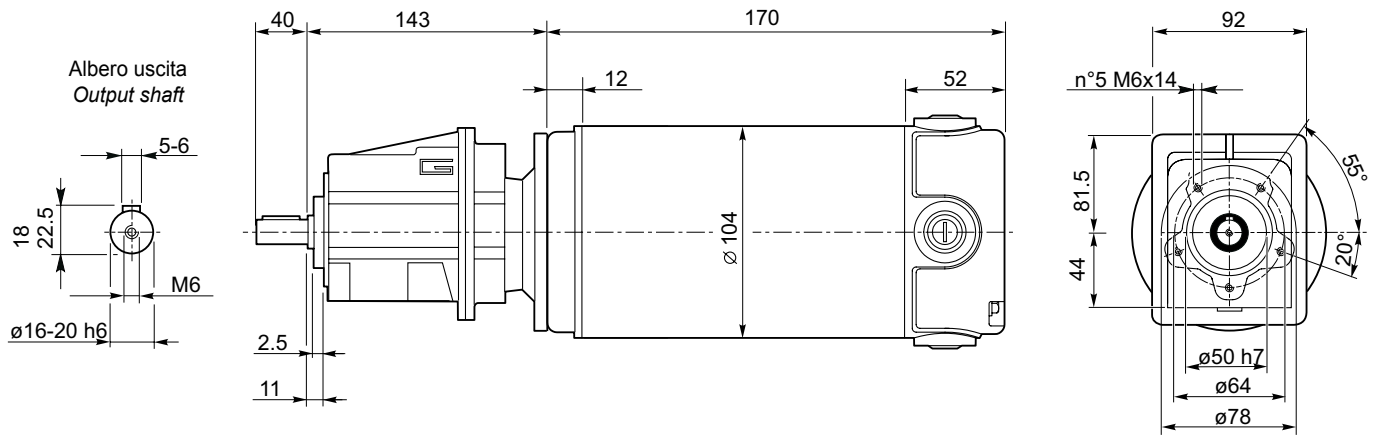
MOTORIDUTTORI C.C. AD INGRANAGGI CILINDRICI PERMANENT MAGNETS D.C. HELICAL GERMOTORS

Dimensioni

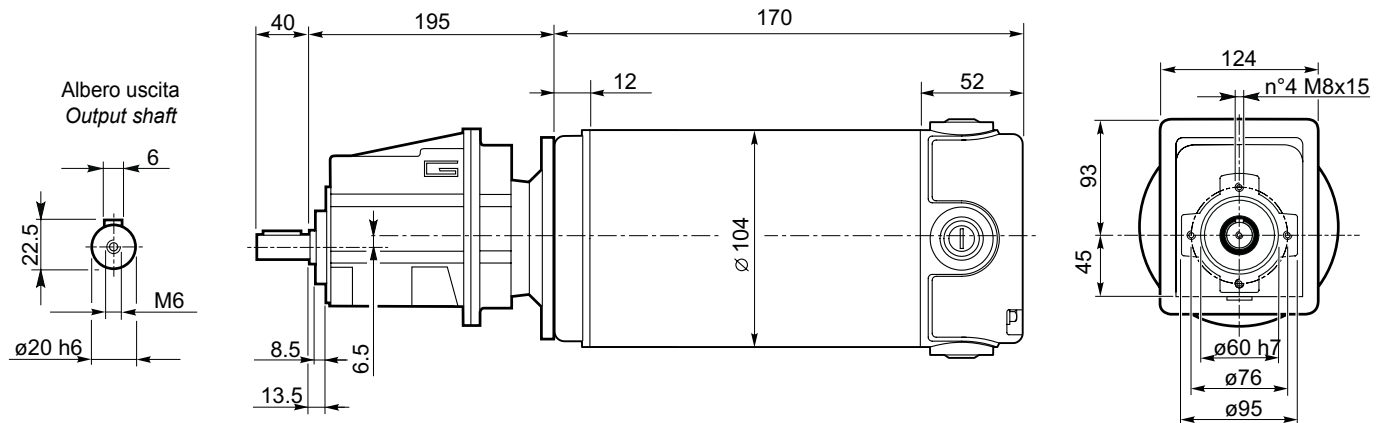
Dimensions

ECMG..U

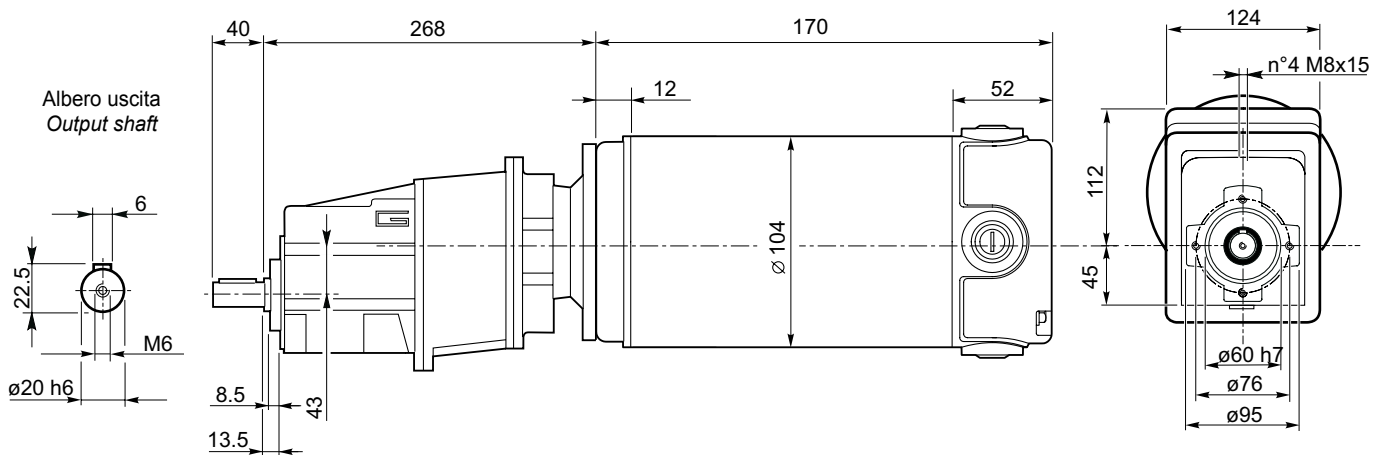
ECMG250/002 U



ECMG250/012 U



ECMG250/013 U

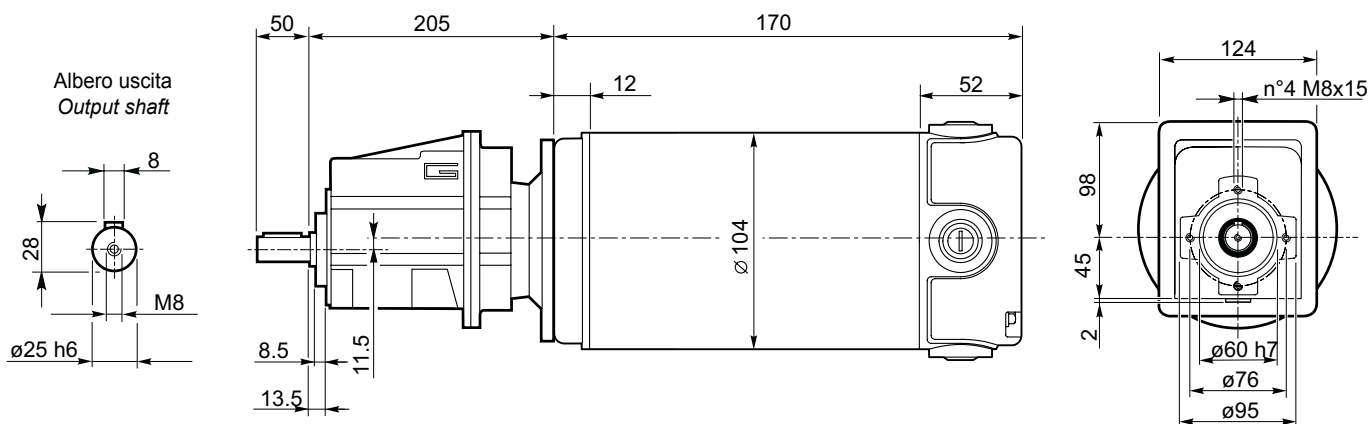


Dimensioni

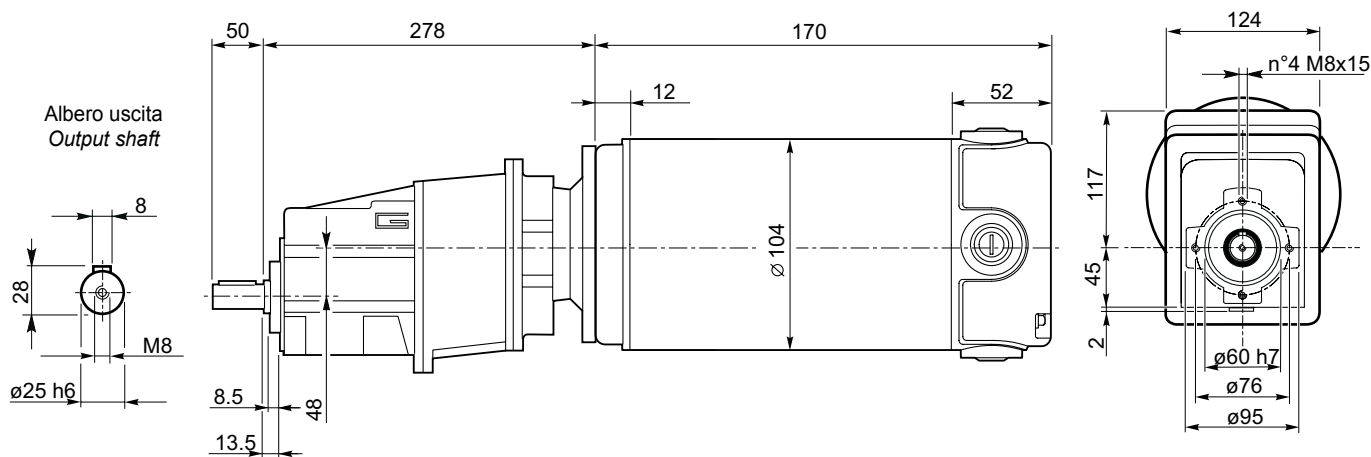
Dimensions

ECMG..U

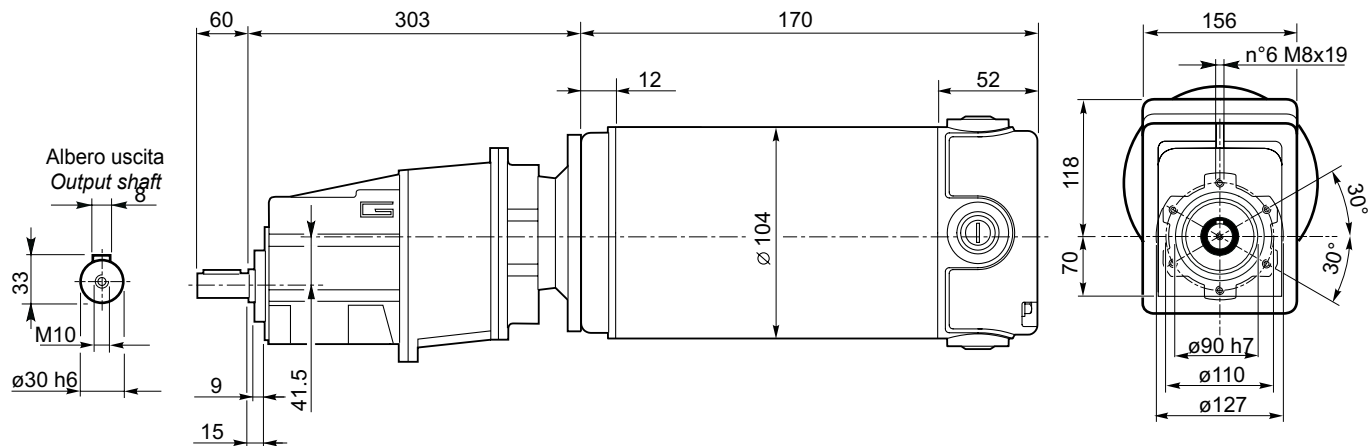
ECMG250/022 U



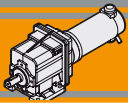
ECMG250/023 U



ECMG250/033 U



ECMG

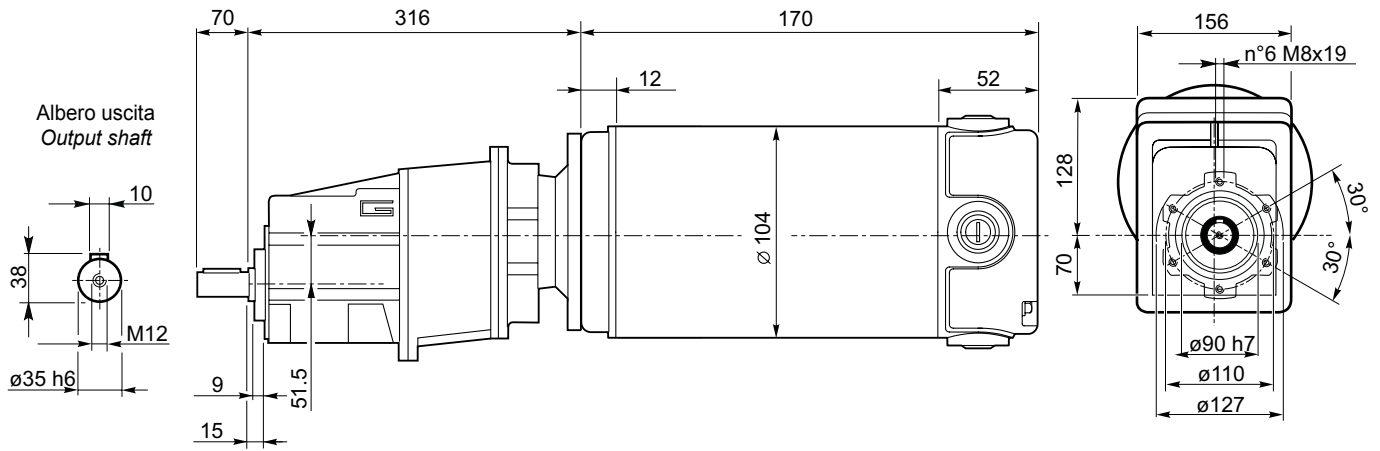


Dimensioni

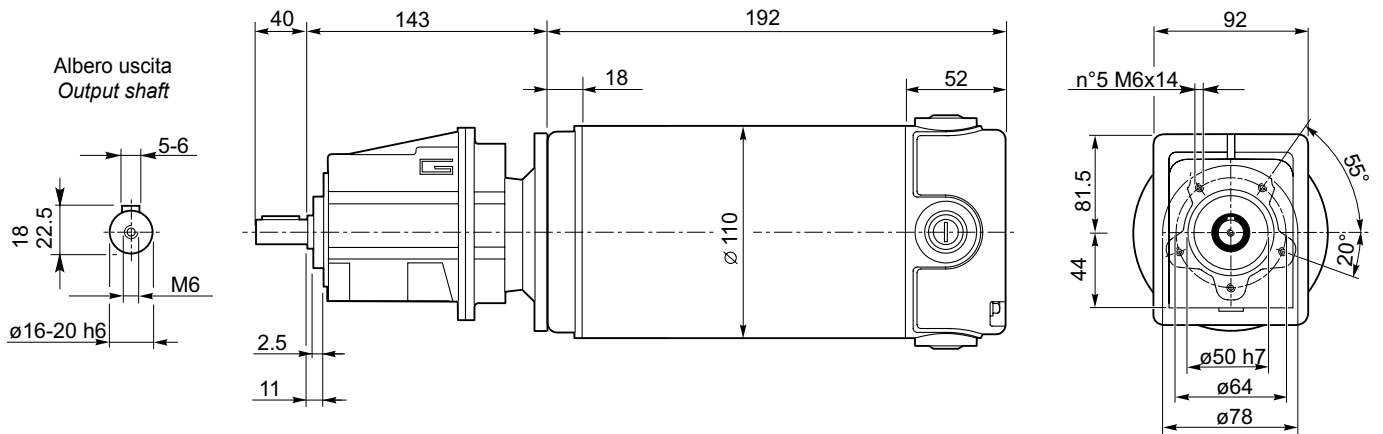
Dimensions

ECMG..U

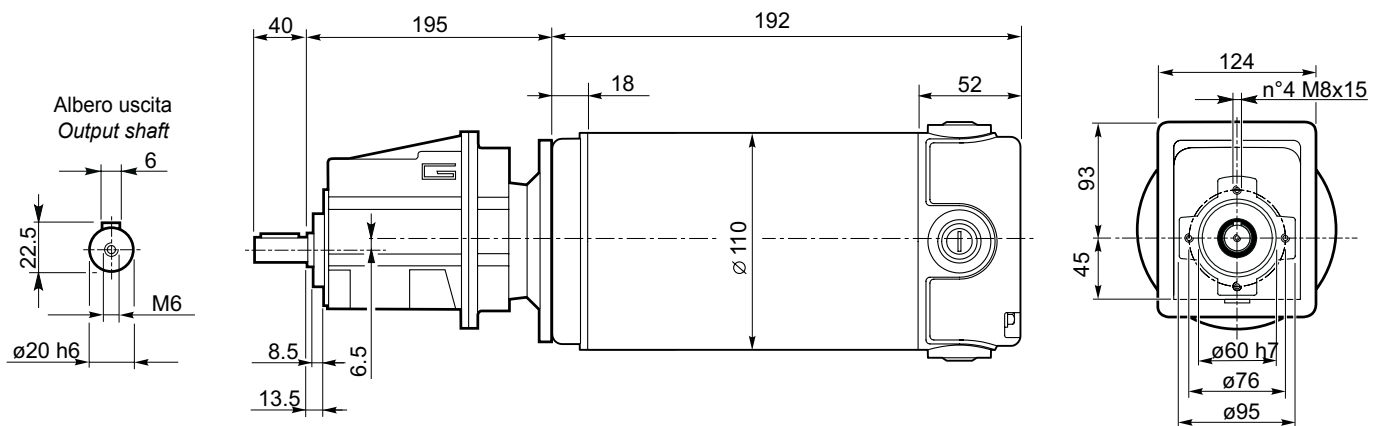
ECMG250/043 U



ECMG350/002 U



ECMG350/012 U

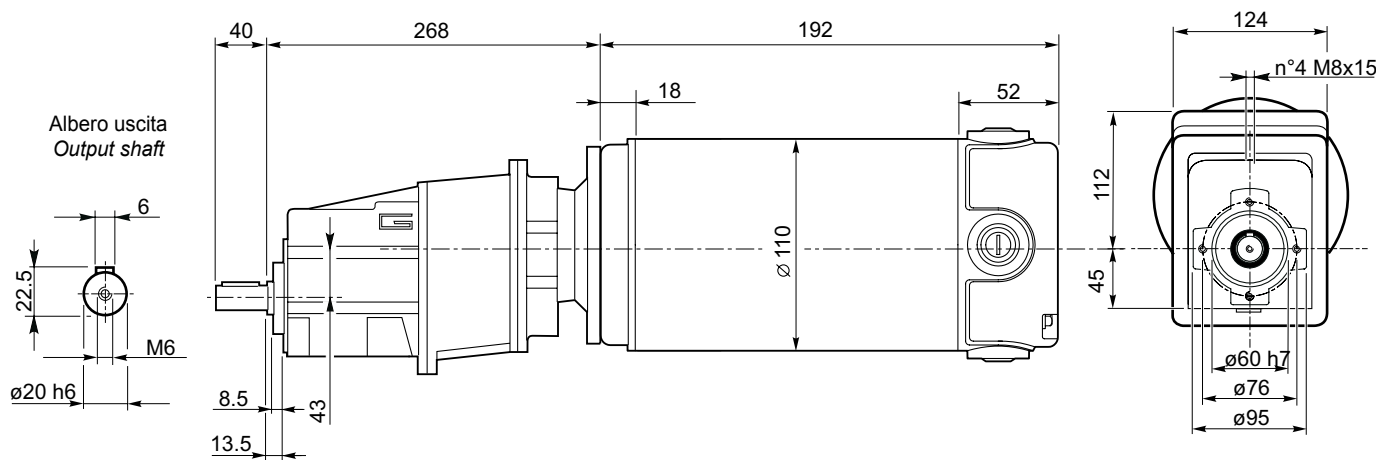


Dimensioni

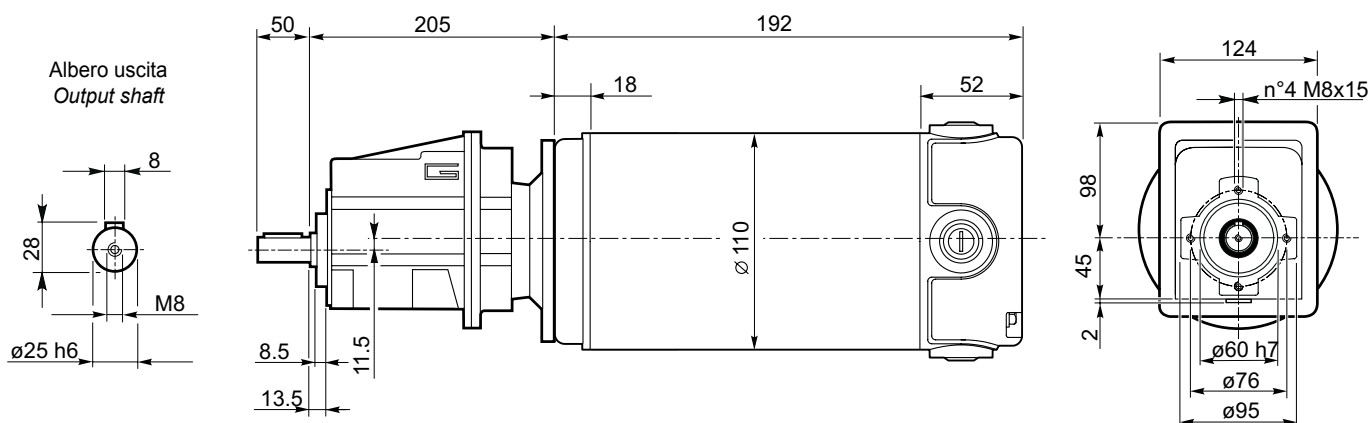
Dimensions

ECMG..U

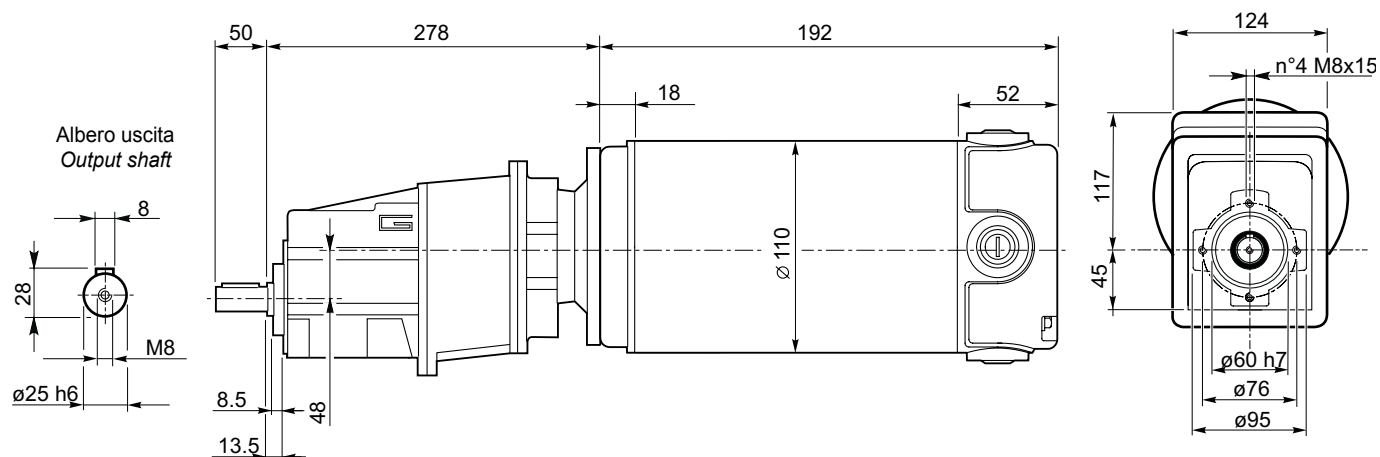
ECMG350/013 U

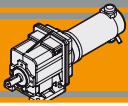


ECMG350/022 U



ECMG350/023 U



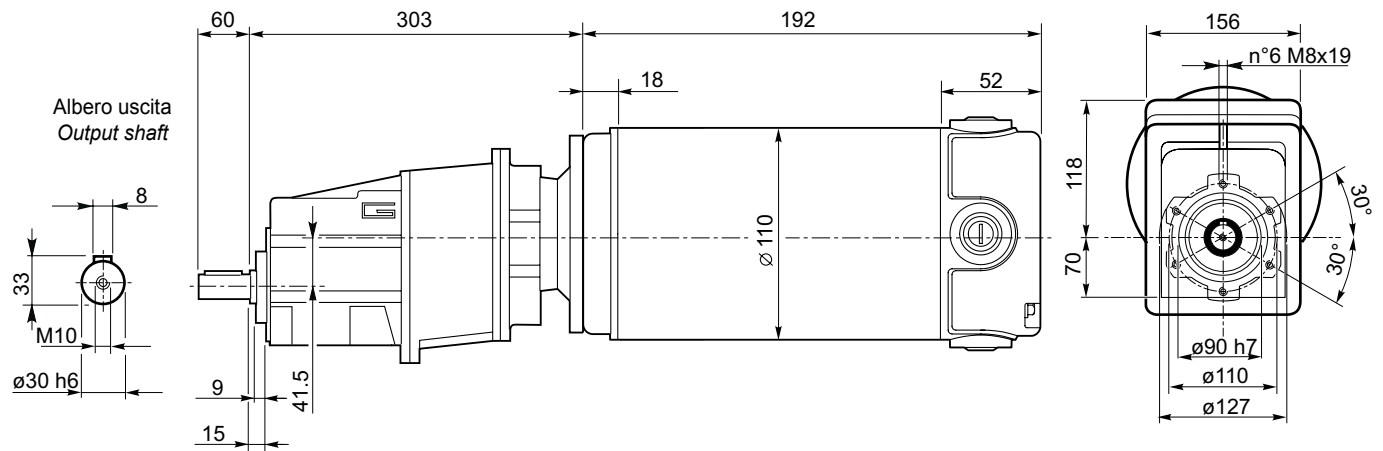


Dimensioni

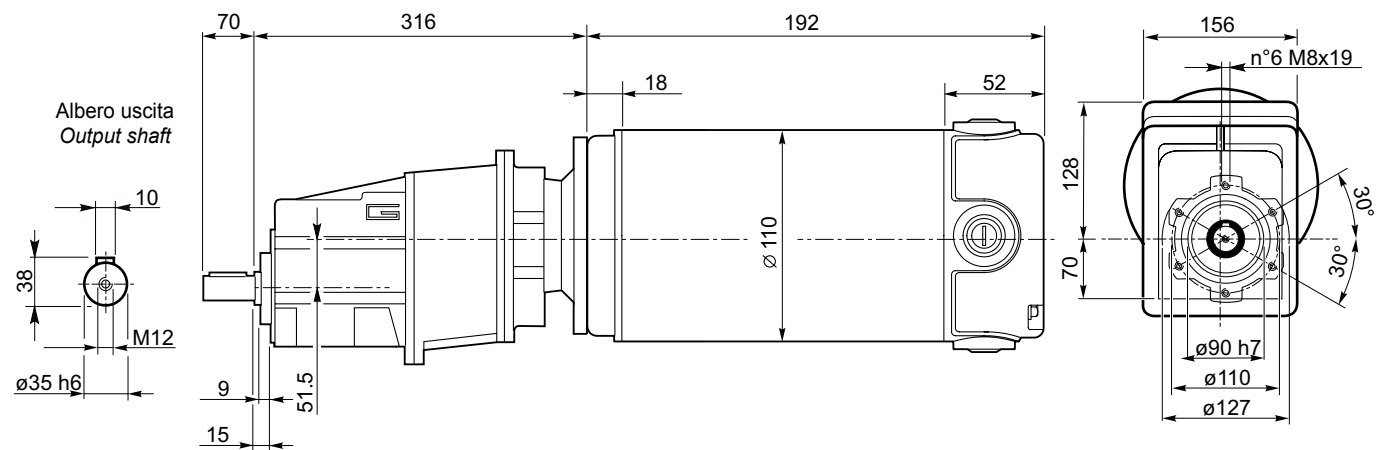
Dimensions

ECMG..U

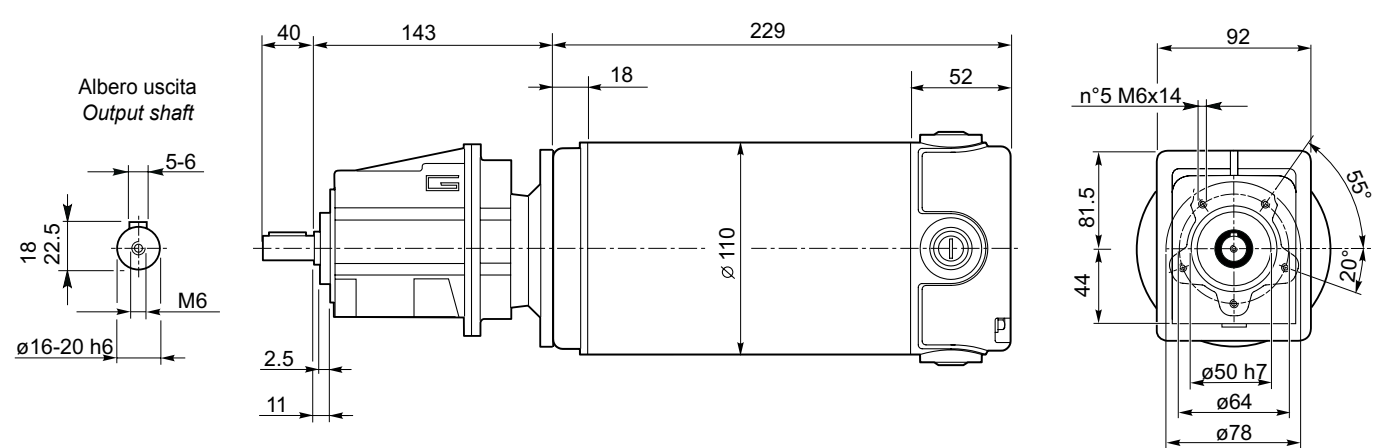
ECMG350/033 U



ECMG350/043 U



ECMG600/002 U

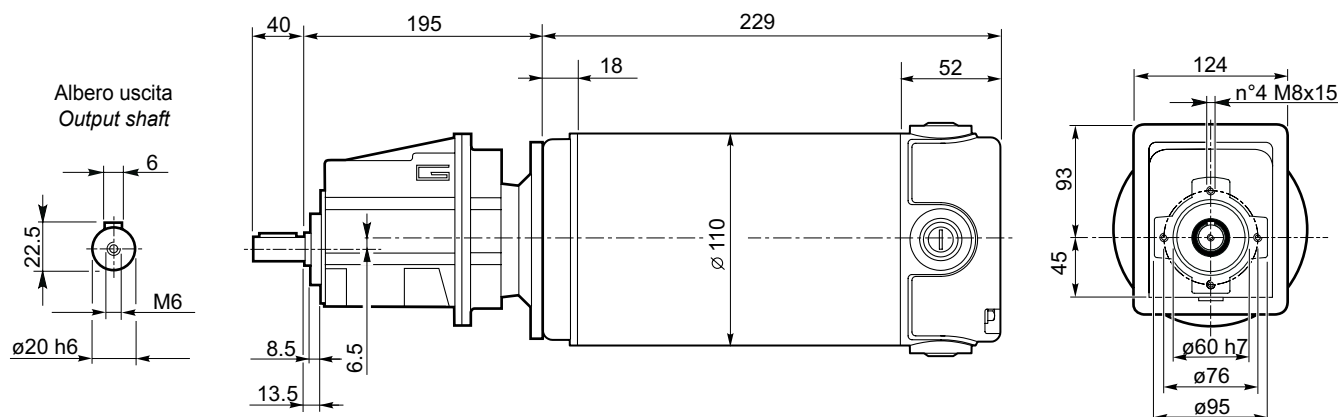


Dimensioni

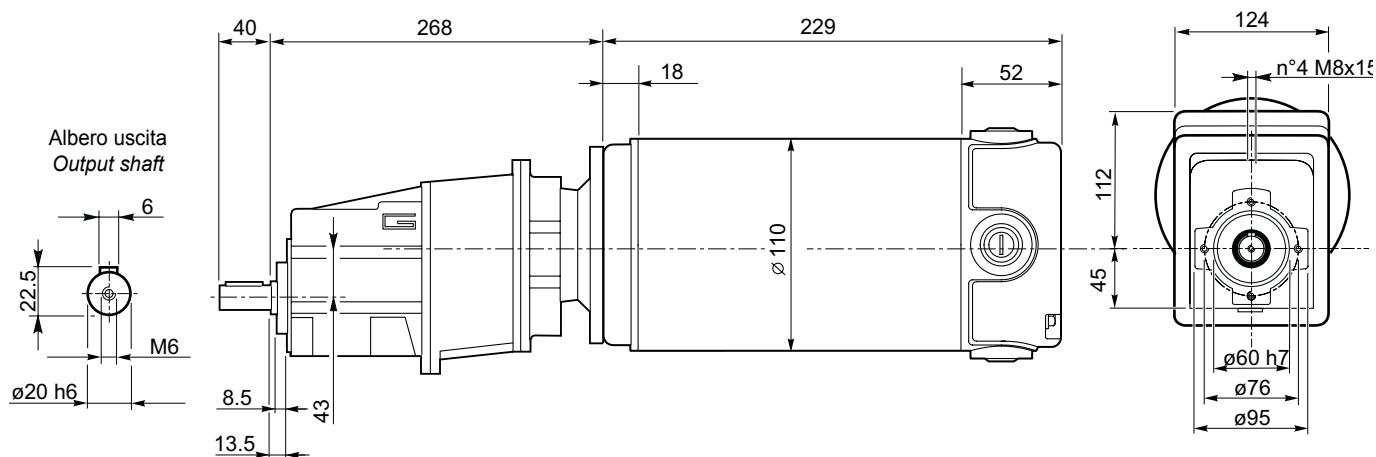
Dimensions

ECMG..U

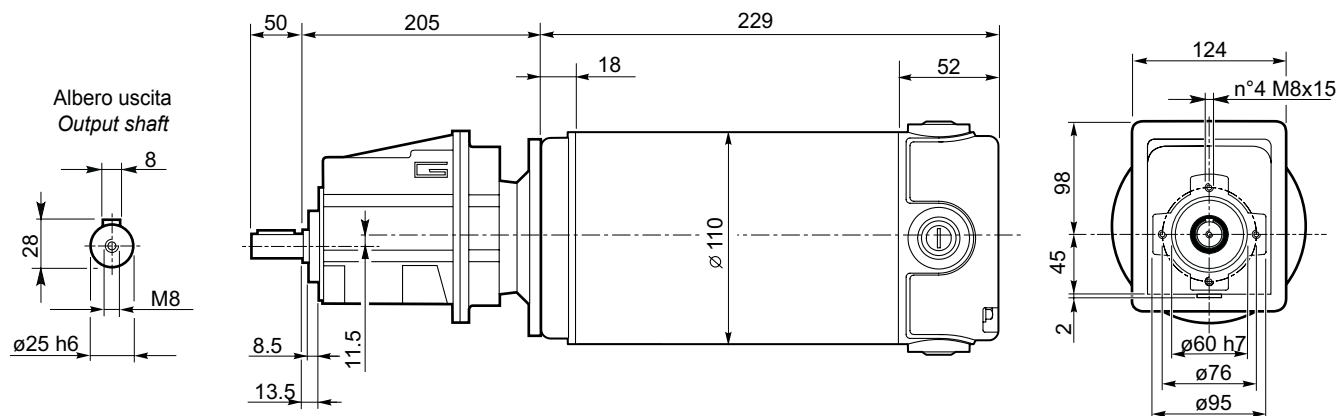
ECMG600/012 U



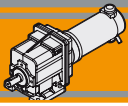
ECMG600/013 U



ECMG600/022 U



ECMG

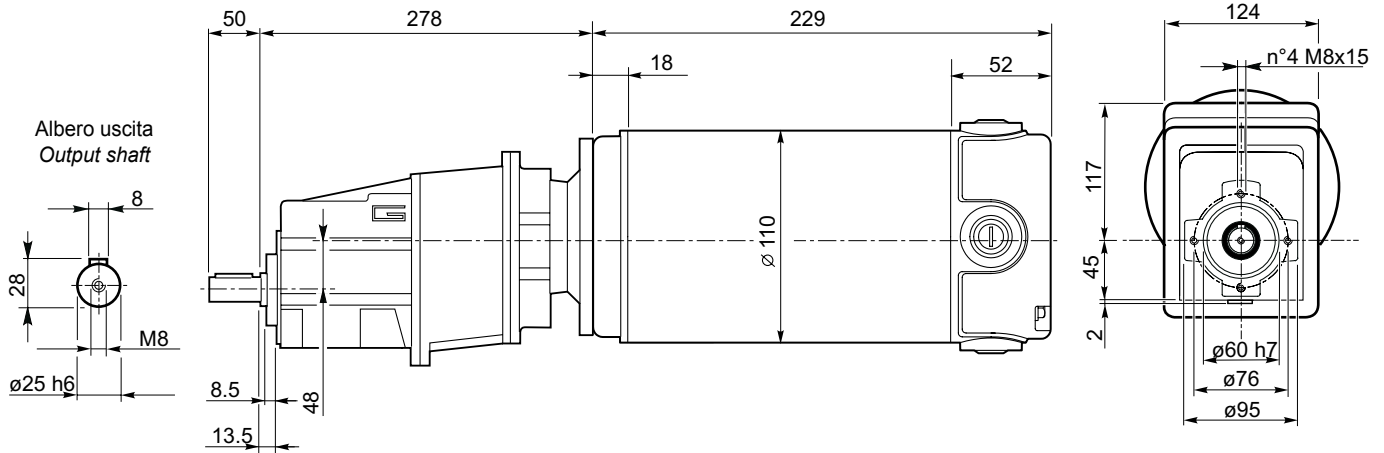


Dimensioni

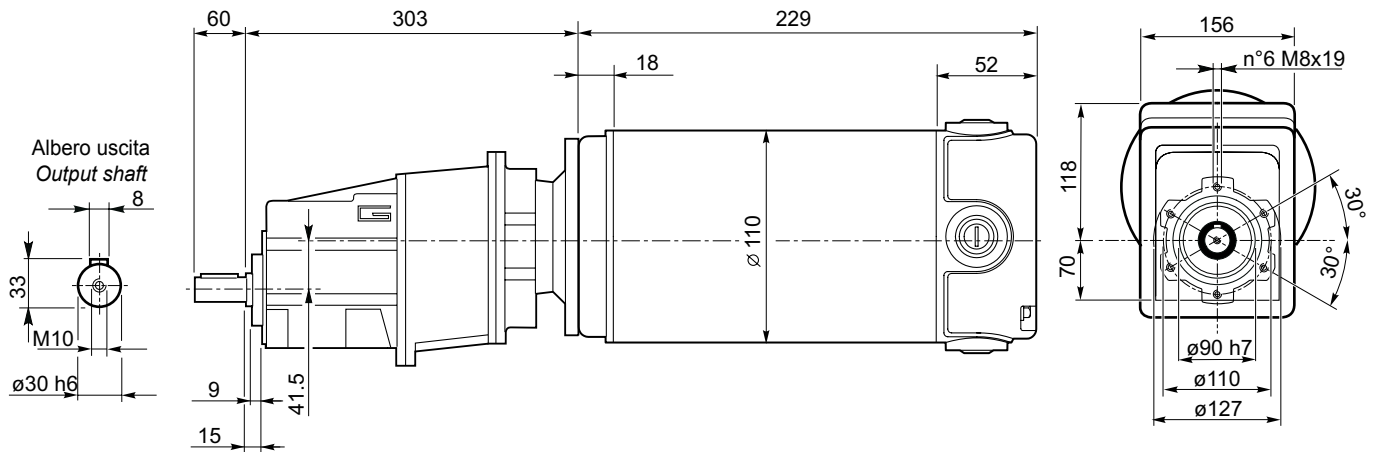
Dimensions

ECMG..U

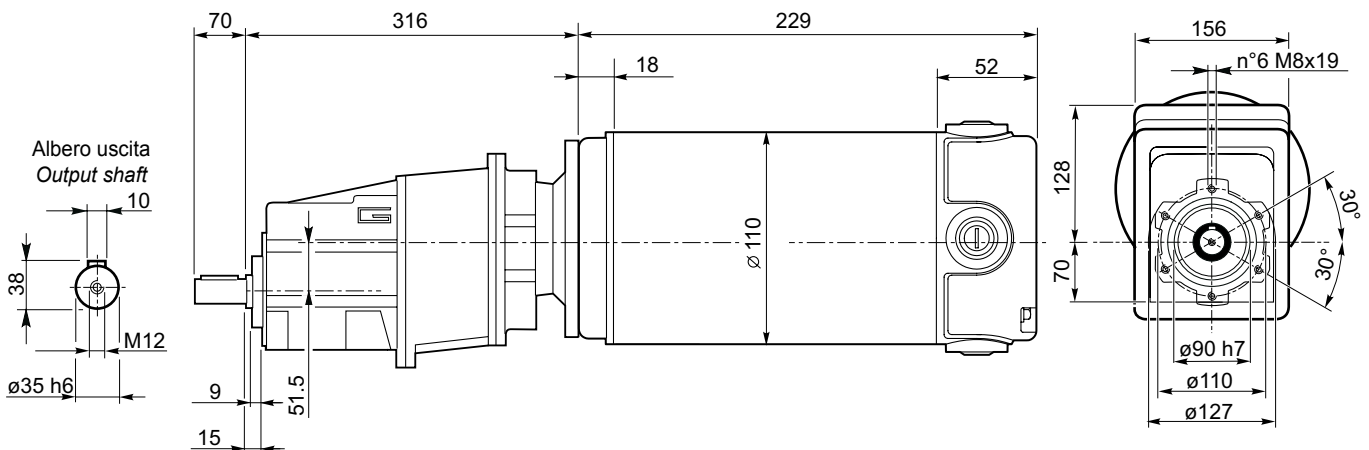
ECMG600/023 U

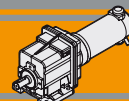


ECMG600/033 U



ECMG600/043 U



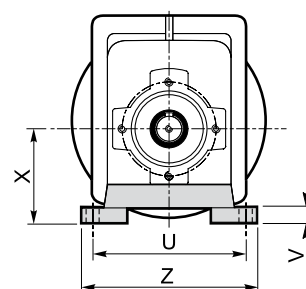
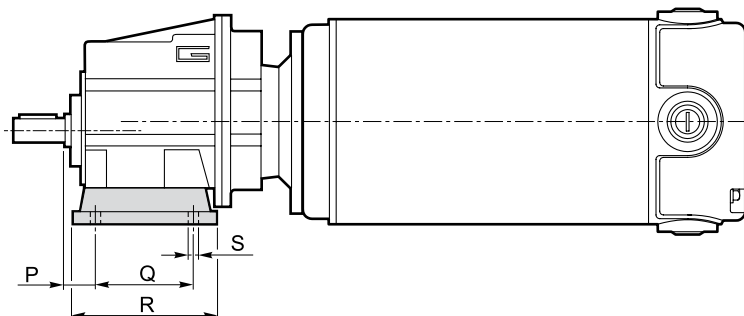


Dimensioni

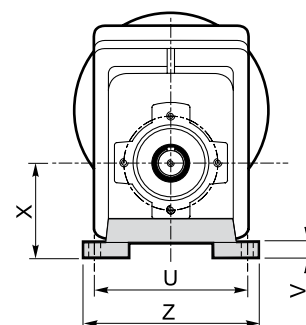
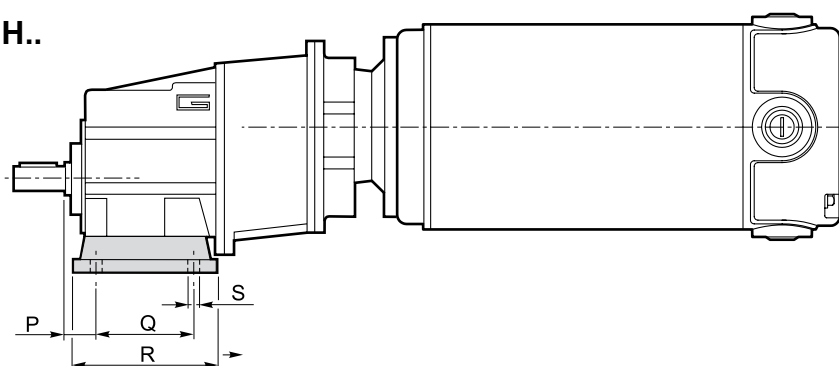
Dimensions

CMG..H

CMG..2 H..



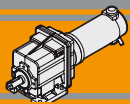
CMG..3 H..



Versione H / H Version

CMG	P	Q	R	S	U	V	X	Z	Piede / Foot	
									Tipo / Type	Peso / Weight [kg]
002	18	60	80	9	100	10	60	120	H60	0.2
	18	80	104	9	110 - 120	10	75	145	H75	0.3
	18	50 - 87	110	9	110	10	85	135	H85	0.4
012 013	20	85	108	9	115	12	65	139	H65	0.7
	18	80	118	9	110	12	75	140	H75	1.0
	25	85	120	9	120	12	80	140	H80	1.1
	18	50 - 87	118	9	110	12	85	130	H85	1.2
	25	130	154	9	110	12	90	135	H90	1.5
022 023	18	60 - 107.5	135	11	130	12	100	155	H100	1.7
	20	85	108	9	115	12	65	139	H65	0.7
	18	80	118	9	110	12	75	140	H75	1.0
	25	85	120	9	120	12	80	140	H80	1.1
	18	50 - 87	118	9	110	12	85	130	H85	1.2
033	25	130	154	9	110	12	90	135	H90	1.5
	18	60 - 107.5	135	11	130	12	100	155	H100	1.7
	30	105	136	14	160	14	95	194	H95	1.5
	30	100	150	11	150	14	110	185	H110	1.9
	18	70			160					
30	165	195	14	135	14	115	170	H115	2.2	
35	110	160	14	170	14	120	210	H120	2.6	
043	30	105	136	14	160	14	95	194	H95	1.5
	30	100	150	11	150	14	110	185	H110	1.9
	18	70			160					
	30	165	195	14	135	14	115	170	H115	2.2
	35	110	160	14	170	14	120	210	H120	2.6

Preferenziale / Preferred

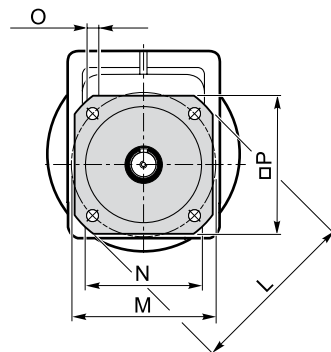
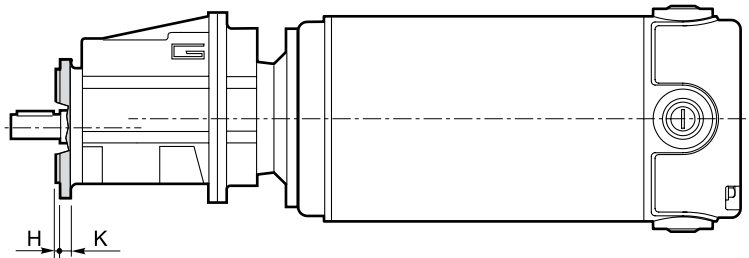


Dimensioni

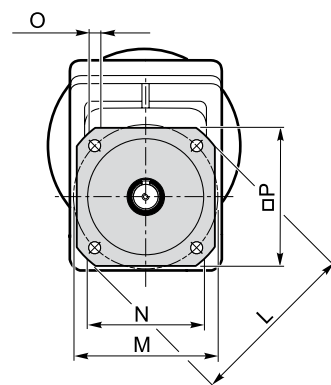
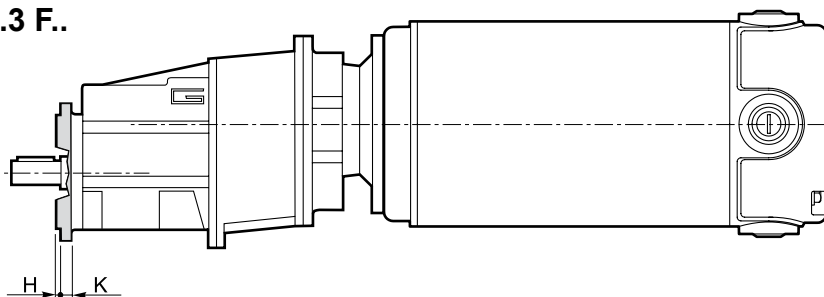
Dimensions

CMG..F

CMG..2 F..



CMG..3 F..



Versione F / F Version

CMG	H	K	L	M	N f7	O	P	Flangia / Flange	
								Tipo / Type	Peso / Weight [kg]
002	3.5	7	105	85	70	6.5	90	F105	0.1
	3.5	8	120	100	80	7	100	F120	0.2
	3.5	8	140	115	95	9	115	F140	0.2
012 013	3	9	120	100	80	9	106	F120	0.5
	3.5	9	140	115	95	9	115	F140	0.8
	3.5	9	160	130	110	9	126	F160	1.1
	3.5	11	200	165	130	11	165	F200	1.8
022 023	3	9	120	100	80	9	106	F120	0.5
	3.5	9	140	115	95	9	115	F140	0.8
	3.5	9	160	130	110	9	126	F160	1.1
	3.5	11	200	165	130	11	165	F200	1.8
033	3.5	11	160	130	110	9	140	F160	1.0
	3.5	11	200	165	130	11	165	F200	1.8
	4	13	250	215	180	14	215	F250	2.9
043	3.5	11	160	130	110	9	140	F160	1.0
	3.5	11	200	165	130	11	165	F200	1.8
	4	13	250	215	180	14	215	F250	2.9

Dimensioni

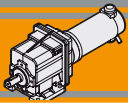
Dimensions

Versione H / H Version											Combinazioni possibili H/F Possible combinations H/F						
CMG	P	Q	R	S	U	V	X	Z	Piede / Foot		F105	F120	F140	F160	F200	F250	F300
									Tipo / Type	Peso / Weight [kg]							
002	18	60	80	9	100	10	60	120	H60	0.2	•	•	•				
	18	80	104	9	110 - 120	10	75	145	H75	0.3	•	•	•				
	18	50 - 87	110	9	110	10	85	135	H85	0.4	•	•	•				
012 013	20	85	108	9	115	12	65	139	H65	0.7		•	•				
	18	80	118	9	110	12	75	140	H75	1.0		•	•	•			
	25	85	120	9	120	12	80	140	H80	1.1		•	•	•			
	18	50 - 87	118	9	110	12	85	130	H85	1.2		•	•	•			
	25	130	154	9	110	12	90	135	H90	1.5		•	•	•	•		
	18	60 - 107.5	135	11	130	12	100	155	H100	1.7		•	•	•	•		
022 023	20	85	108	9	115	12	65	139	H65	0.7		•	•				
	18	80	118	9	110	12	75	140	H75	1.0		•	•	•			
	25	85	120	9	120	12	80	140	H80	1.1		•	•	•			
	18	50 - 87	118	9	110	12	85	130	H85	1.2		•	•	•			
	25	130	154	9	110	12	90	135	H90	1.5		•	•	•	•		
	18	60 - 107.5	135	11	130	12	100	155	H100	1.7		•	•	•	•		
033	30	105	136	14	160	14	95	194	H95	1.5				•	•		
	30	100	150	11	150	14	110	185	H110	1.9				•	•		
	18	70			160												
	30	165	195	14	135	14	115	170	H115	2.2				•	•	•	
	35	110	160	14	170	14	120	210	H120	2.6				•	•	•	
043	30	105	136	14	160	14	95	194	H95	1.5				•	•		
	30	100	150	11	150	14	110	185	H110	1.9				•	•		
	18	70			160												
	30	165	195	14	135	14	115	170	H115	2.2				•	•	•	
	35	110	160	14	170	14	120	210	H120	2.6				•	•	•	

Preferenziale / Preferred

• Combinazioni possibili H/F / Possible combinations H/F

Versione F / F Version									
CMG	H	K	L	M	N f7	O	P	Flangia / Flange	
								Tipo / Type	Peso / Weight [kg]
002	3.5	7	105	85	70	6.5	90	F105	0.1
	3.5	8	120	100	80	7	100	F120	0.2
	3.5	8	140	115	95	9	115	F140	0.2
012 013	3	9	120	100	80	9	106	F120	0.5
	3.5	9	140	115	95	9	115	F140	0.8
	3.5	9	160	130	110	9	126	F160	1.1
	3.5	11	200	165	130	11	165	F200	1.8
022 023	3	9	120	100	80	9	106	F120	0.5
	3.5	9	140	115	95	9	115	F140	0.8
	3.5	9	160	130	110	9	126	F160	1.1
	3.5	11	200	165	130	11	165	F200	1.8
033	3.5	11	160	130	110	9	140	F160	1.0
	3.5	11	200	165	130	11	165	F200	1.8
	4	13	250	215	150	14	215	F250	2.9
043	3.5	11	160	130	110	9	140	F160	1.0
	3.5	11	200	165	130	11	165	F200	1.8
	4	13	250	215	150	14	215	F250	2.9

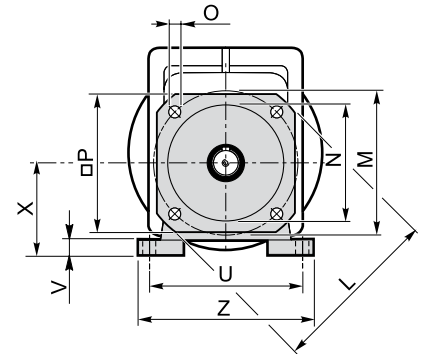
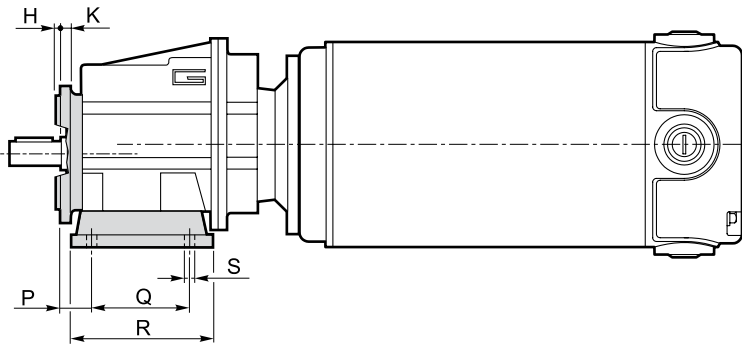


Dimensioni

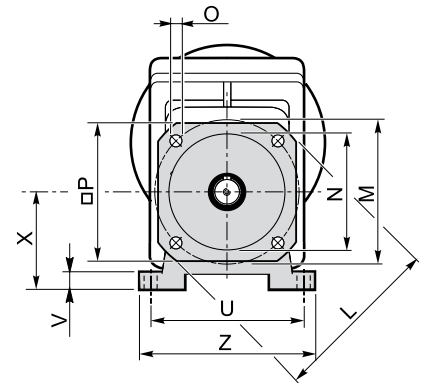
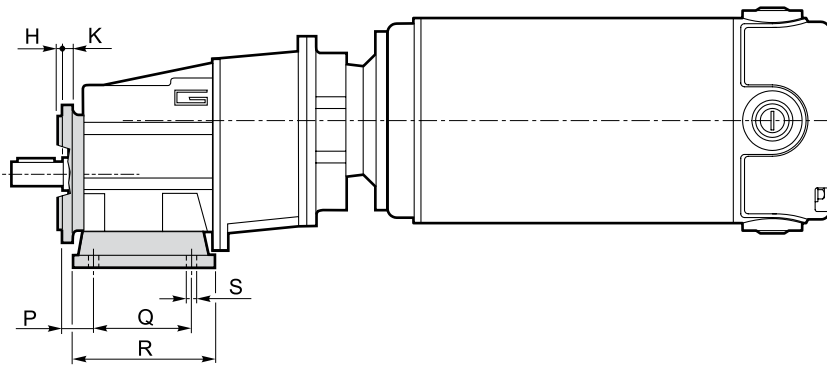
Dimensions

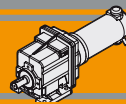
CMG..H../F..

CMG..2 H../F..



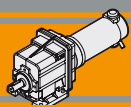
CMG..3 H../F..





Note

ECMG



Note

HEADQUARTERS

 **TRANSTECNO SRL**
Via Caduti di Sabbiuno, 11 D/E
40011 Anzola Emilia (BO) - ITALY
Tel. +39.051.6425811
Fax +39.051.734943
info@transtecno.com
www.transtecno.com

MANUFACTURING PLANT

 **HANGZHOU TRANSTECNO POWER TRANSMISSIONS CO; LTD**
Changlian Road, Fengdu industry zone,
Pingyao town Yuhang area,
Hangzhou, 311115 - CHINA
Tel. +86.571.86920260
Fax. +86.571.86921810
info-china@transtecno.com
www.transtecno.cn

SALES OFFICES & WAREHOUSES

 **GEARTECNO ITALIA SRL**
Via Ferrari, 27/11
41043 Fraz. Corlo,
Formigine (MO) - ITALY
Tel. +39.059.557522
Fax +39.059.557439
info@geartecno.com
www.geartecno.com

 **TRANSTECNO B.V.**
De Stuwdam 43
ind. terrein Wieken/Vinkenhoef
3815 KM Amersfoort
THE NETHERLANDS
Tel. +31.(0)33.4519505
Fax +31.(0)33.4519506
info@transtecno.nl
www.transtecno.nl


TRANSTECNO®
THE MODULAR GEARMOTOR
www.transtecno.com

SALES OFFICES

 **SALES OFFICE BRAZIL**
Rua Dr. Freire Alemão 155 / 402
CEP. 90450-060
Auxiliadora Porto Alegre-RS-BRAZIL
Tel. +55.51.3251.5447
Fax +55.51.3251.5447
Mobile +55 51 811 45 962
braziloffice@transtecno.com
www.transtecno.com.br

 **SALES OFFICE FRANCE**
12 Impasse des Mûriers
38300 Ruy - FRANCE
Tel. +33 (0) 6 85 12 09 87
Fax – Italy +39 051 733904
franceoffice@transtecno.com
www.transtecno.fr

 **SALES OFFICE SOUTH KOREA**
D-304 Songdo BRC
Smart Valley 30,
Songdomirae-ro, Yeonsu-gu,
Incheon, 406-840, KOREA
Tel: +82 (0) 70 8288 2107
Fax. +82-32-815-2107
Mobile: +82 10 5094 2107
koreaoffice@transtecno.com
www.transtecno.co.kr

 **SALES OFFICE INDIA**
A/10, Anagha,
S.N Road, Mulund (W),
Mumbai, 400080
INDIA
Fax – Italy +39 051 733904
Mobile: +91 9820614698
indiaoffice@transtecno.com


 **SALES OFFICE OCEANIA**
Unit 11, 5-27 Wallace Ave
Point Cook 3030
Victoria - AUSTRALIA
Tel. +61.03.9369.9774
Fax +61.03.9369.9775
Mobile +61.0438.060.997
oceaniaoffice@transtecno.com
www.transtecno.com.au

 **SALES OFFICE EASTERN EUROPE & MIDDLE EAST**
St. Magnolienweg 4
D-31860 Emmerthal - GERMANY
Tel. +49.5151.963076
Fax +49.5151.963076
Mobile +49.172.4044907
emeoffice@transtecno.com

 **SALES OFFICE GUANGZHOU**
Room 401A, LeTian Building,
No.188 TangAn Road,
Tianhe District, Guangzhou City,
510665 - CHINA
Tel: + 86 20 38776057
Fax: + 86 20 38776127
guangzhouoffice@transtecno.com