

Drive Elements

Bolt-on Hubs & Weld-on Hubs



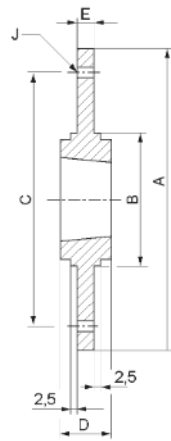
Bolt-on Hubs

Taper bolt-on hubs are designed for use with taper bushes. They are made of grey cast iron and are phosphated for enhanced rust prevention. The bolt-on hubs are used whenever welding is impossible or not permitted. They offer a convenient way to mount rotating parts such as fans, fan wheels and other devices quickly, easily and firmly on a shaft. Parts can be fitted to either the left or right side of the hubs.

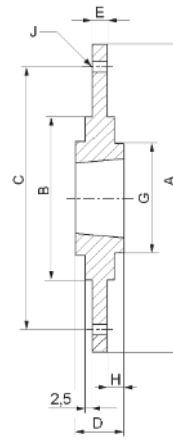


Product features

- › Standard models of type SM or BF
- › For taper bushes of types 1210 to 3020
- › Centric diameters of mounting parts from Ø 100 to Ø 340 mm
- › Material: Cast iron EN-GJL-200
- › Special designs possible



Type SM



Type BF

Type SM

Hub size	Bush no.	A mm	B mm	C mm	D mm	E mm	J mm
SM 12	1210	180	90	135	25	6.5	6 x 7.5
SM 16-1	1610	200	110	150	25	7.5	6 x 7.5
SM 16-2	1615	200	110	150	38	7.5	6 x 7.5
SM 20	2012	270	140	190	32	8.5	6 x 9.5
SM 25	2517	340	170	240	45	9.5	8 x 11.5
SM 30-1	3020	430	220	300	51	13.5	8 x 13.5
SM 30-2	3020	485	250	340	51	13.5	8 x 13.5

Type BF

Hub size	Bush no.	A mm	B mm	C mm	D mm	E mm	G mm	H mm	J mm
BF 12	1210	120	80	100	25	5.5	75	10	6 x 7.5
BF 16	1610	130	90	110	25	6.5	85	10	6 x 7.5
BF 20	2012	145	100	125	32	8.5	95	13	6 x 9.5
BF 25	2517	185	130	155	45	11.5	119	20	8 x 11.5
BF 30	3020	220	165	190	51	11.5	147	20	8 x 13.5

Weld-on Hubs

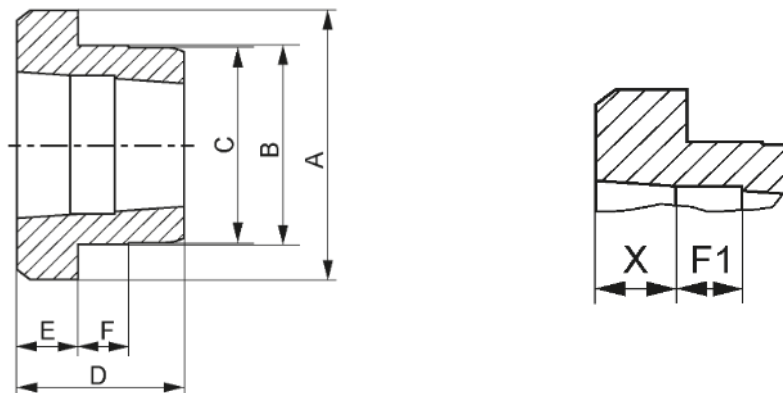
Taper weld-on hubs are made of steel and are produced with a taper bore to be fitted with standard taper bushes. The protruding flange provides a convenient way to weld these hubs to fans, impellers, steel discs, sprocket wheel pulleys and many other devices that requires to be firmly mounted on a shaft. Weld-on hubs are easy to install and are suitable for all tough applications.

By tightening the screws, the taper bore is pressed together and thereby attaches the hub to the shaft with a press fit. This design eliminates any mounting difficulties.



Product features

- › Standard models of type WM or WH
- › For taper bushes of types 1210 to 5050
- › Centrics of \varnothing 60 to \varnothing 242 mm
- › Material: Steel
- › Special designs possible



Type WM

Hub size	Bush no.	A mm	B mm	C mm	D mm	E mm	F mm	F1 mm	X mm
WM 12	1210	70	60	58	25	9	10	8	9
WM 16-1	1610	83	70	68	25	9	10	8	9
WM 16-2	1615	83	70	68	38	16	11	8	16
WM 20	2012	95	90	88	32	12	12	10	12
WM 25	2517	127	110	108	45	19	13	10	19
WM 30-2	3020	152	130	125	51	20	15	12	20
WM 30-3	3030	152	130	125	76	25	19	12	25
WM 35	3535	184	155	151	89	32	25	15	32
WM 40	4040	225	195	187	102	32	32	15	32
WM 45	4545	254	220	213	114	38	38	20	38
WM 50	5050	276	242	228	127	38	38	20	38

Type WH

Hub size	Bush no.	A mm	B mm	C mm	D mm	E mm	F mm	F1 mm	X mm
WH 12	1213	70	65	64.5	25	9	10	-	-
WH 16	1610	83	75	74.5	25	9	10	-	-
WH 20	2012	95	90	89.5	32	12	12	-	-
WH 25	2517	115	110	109.5	45	19	15	-	-
WH 30	3020	145	140	139.5	51	20	15	21	14
WH 35	3525	190	180	179.5	65	25	25	31	19
WH 40	4040	200	190	189.5	102	32	30	27	22
WH 45	4545	210	200	199.5	114	40	30	33	25
WH 50	5050	230	220	219.5	127	40	35	37	20

Tecnamic GmbH

Zunftweg 4
59457 Werl
Germany

T +49 2922 9273-888
F +49 2922 9273-880
E info@tecnamic.com



TECNAMIC

www.tecnamic.com