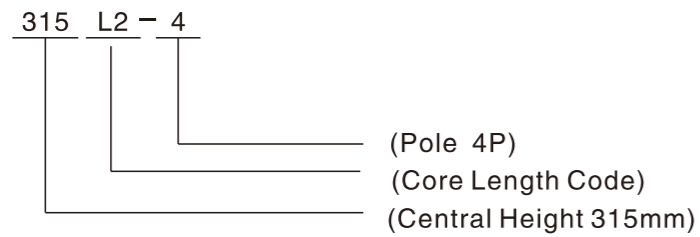


Model specification



Work conditions

Rated voltage:380~1400V
 Rated power:0.75kw~315kw
 Poles:2-12P
 Protection:IP55,IP56
 Insulation class:F,H
 Altitude:1000 m.a.s.l
 Ex-mark:Exd I;Exd II BT4,Exd II CT4
 Ambient temperature:-15~40 celsius degree

The Above Is The Default Parameters,if You Have Any Other Special Requirements,you Can Contact Us For Customization.

TECHNICAL DATA(50HZ)

Frame	output (kW)		Rated Current			Speed r/min	Eff % η	Power Factor Φ	Rated torque Tn(N.m)	locked rotor torque Tst/Tn	Max torque Tmax/Tn	locked rotor current rated current Ist/In	Weight kg
	KW	HP	380V	400V	415V								
Synchronous speed 3000rpm													
OMEX-80M1-2	0.75	1.0	1.8	1.7	1.6	2875	77.4	0.83	2.5	2.2	2.3	6.0	24
OMEX-80M2-2	1.1	1.5	2.5	2.4	2.3	2875	79.6	0.84	3.7	2.2	2.3	6.0	25
OMEX-90S-2	1.5	2.0	3.3	3.2	3.0	2890	81.3	0.84	5.0	2.2	2.3	7.0	35
OMEX-90L-2	2.2	3.0	4.7	4.5	4.3	2890	83.2	0.85	7.4	2.2	2.3	7.0	38
OMEX-100L-2	3	4.0	6.2	5.9	5.7	2891	84.6	0.87	10.0	2.2	2.3	7.0	44
OMEX-112M-2	4	5.5	8.0	7.6	7.4	2914	85.8	0.88	13.3	2.2	2.3	7.0	46
OMEX-132S1-2	5.5	7.5	11.2	10.6	10.2	2918	87.0	0.88	18.1	2.2	2.3	7.5	81
OMEX-132S2-2	7.5	10	14.6	13.9	13.4	2920	88.1	0.88	24.7	2.2	2.4	7.5	89
OMEX-160M1-2	11	15	21.0	20.0	19.2	2930	89.4	0.89	35.9	2.2	2.4	7.5	142
OMEX-160M2-2	15	20	28.4	26.9	26.0	2930	90.3	0.89	48.9	2.2	2.4	7.5	152
OMEX-160L-2	18.5	25	34.7	33.0	31.8	2937	90.9	0.89	60.3	2.2	2.4	7.5	169
OMEX-180M-2	22	30	41.6	39.5	38.1	2940	91.3	0.89	71.5	2.0	2.3	7.5	227
OMEX-200L1-2	30	40	56.2	53.4	51.5	2950	92.0	0.88	97.1	2.0	2.4	7.5	265
OMEX-200L2-2	37	50	68.2	64.8	62.5	2950	92.5	0.89	120	2.0	2.4	7.5	275
OMEX-225M-2	45	60	82.5	78.4	75.6	2960	92.9	0.89	145	2.0	2.3	7.6	340
OMEX-250M-2	55	75	99.5	94.8	91.1	2965	93.2	0.90	177	2.1	2.3	7.6	477
OMEX-280S-2	75	100	135	128	123	2970	93.8	0.90	241	2.0	2.3	7.5	655
OMEX-280M-2	90	120	160	152	146	2970	94.1	0.91	289	2.1	2.3	7.5	733
OMEX-315S-2	110	150	194	185	178	2970	94.3	0.91	353	1.8	2.3	7.0	1140
OMEX-315M-2	132	180	233	221	213	2975	94.6	0.91	424	1.8	2.3	7.0	1170
OMEX-315L1-2	160	220	278	265	255	2975	94.8	0.92	514	1.8	2.3	7.0	1385
OMEX-315L2-2	200	270	348	330	318	2975	95.0	0.92	642	1.8	2.3	7.0	1610
OMEX-355M1-2	220	300	383	364	351	2985	95.0	0.92	704	1.6	2.4	7.0	1680
OMEX-355M2-2	250	340	434	412	398	2980	95.0	0.92	801	1.6	2.4	7.0	1720
OMEX-355L1-2	280	380	485	461	444	2985	95.0	0.92	896	1.6	2.4	7.0	1780
OMEX-355L2-2	315	430	547	520	501	2980	95.0	0.92	1010	1.6	2.4	7.0	1850

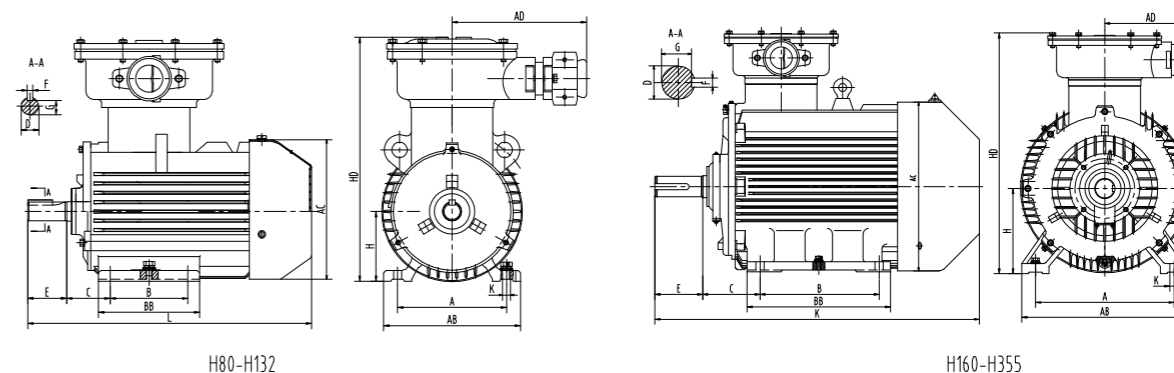
Frame	output (kW)		Rated Current			Speed r/min	Eff % η	Power Factor Φ	Rated torque Tn(N.m)	locked rotor torque Tst/Tn	Max torque Tmax/Tn	locked rotor current Ist/In	Weight kg
	KW	HP	380V	400V	415V								
Synchronous speed 1500rpm													
OMEX-80M1-4	0.55	0.75	1.5	1.4	1.3	1390	75	0.75	3.8	2.3	2.3	6.3	24
OMEX-80M2-4	0.75	1.0	1.9	1.8	1.7	1400	79.6	0.76	5.2	2.3	2.3	6.0	27
OMEX-90S-4	1.1	1.5	2.7	2.5	2.4	1440	81.4	0.75	7.5	2.3	2.3	6.0	34
OMEX-90L-4	1.5	2.0	3.6	3.4	3.3	1445	82.8	0.75	10.2	2.3	2.3	6.0	38
OMEX-100L1-4	2.2	3.0	4.9	4.6	4.5	1440	84.3	0.81	14.8	2.3	2.3	7.0	46
OMEX-100L2-4	3	4.0	6.5	6.2	6.0	1440	85.5	0.82	20.2	2.3	2.3	7.0	51
OMEX-112M-4	4	5.5	8.6	8.1	7.8	1445	86.6	0.82	26.5	2.3	2.3	7.0	68
OMEX-132S-4	5.5	7.5	11.5	10.9	10.5	1445	87.7	0.82	36.5	2.3	2.3	7.0	85
OMEX-132M-4	7.5	10	15.3	14.5	14.0	1445	88.7	0.83	49.7	2.3	2.3	7.0	105
OMEX-160M-4	11	15	22.1	21.0	20.3	1460	89.8	0.85	72.0	2.2	2.3	7.0	150
OMEX-160L-4	15	20	29.6	28.1	27.1	1460	90.6	0.86	98.1	2.2	2.3	7.5	171
OMEX-180M-4	18.5	25	35.8	34.0	32.8	1470	91.2	0.86	121	2.2	2.3	7.5	211
OMEX-180L-4	22	30	42.3	40.2	38.8	1470	91.6	0.86	143	2.2	2.3	7.5	224
OMEX-200L-4	30	40	57.3	54.4	52.5	1470	92.3	0.86	195	2.2	2.3	7.2	290
OMEX-225S-4	37	50	69.7	66.2	63.8	1480	92.7	0.86	240	2.2	2.3	7.2	346
OMEX-225M-4	45	60	84.3	80.1	77.2	1480	93.1	0.86	291	2.2	2.3	7.2	358
OMEX-250M-4	55	75	103	97.5	94.0	1480	93.5	0.86	356	2.2	2.3	7.2	492
OMEX-280S-4	75	100	139	132	127	1480	94.0	0.88	484	2.2	2.3	7.2	670
OMEX-280M-4	90	120	167	158	153	1480	94.2	0.88	581	2.2	2.3	6.9	743
OMEX-315S-4	110	150	201	191	184	1485	94.5	0.88	710	2.1	2.2	6.9	986
OMEX-315M-4	132	180	241	229	220	1485	94.7	0.88	852	2.1	2.2	6.9	1070
OMEX-315L1-4	160	220	288	273	263	1485	94.9	0.89	1032	2.1	2.2	6.9	1350
OMEX-315L2-4	200	270	359	341	328	1485	95.1	0.89	1291	2.1	2.2	6.9	1572
OMEX-355M1-4	220	300	390	371	357	1490	95.1	0.90	1410	2.1	2.2	6.9	1690
OMEX-355M2-4	250	340	443	421	406	1490	95.1	0.90	1602	2.1	2.2	6.9	1750
OMEX-355L1-4	280	380	495	470	453	1490	95.1	0.90	1795	2.1	2.2	6.9	1800
OMEX-355L2-4	315	430	559	531	511	1490	95.1	0.90	2019	2.1	2.2	6.9	1850

Safe and efficient motor solution providers and manufactures

Frame	output (kW)		Rated Current			Speed r/min	Eff % η	Power Factor Φ	Rated torque Tn(N.m)	locked rotor torque Tst/Tn	Max torque Tmax/Tn	locked rotor current Ist/In	Weight kg
	KW	HP	380V	400V	415V								
Synchronous speed 1000rpm													
OMEX-80M1-6	0.37	0.5	1.3	1.2	0.7	910	63	0.7	3.9	1.9	2.1	4	20
OMEX-80M2-6	0.55	0.75	1.5	1.4	0.9	910	75.4	0.72	5.8	1.9	2.1	4	25
OMEX-90S-6	0.75	1.0	2.1	2.0	1.9	934	75.9	0.72	7.7	2.0	2.1	5.5	39
OMEX-90L-6	1.1	1.5	3.0	2.8	2.7	945	78.1	0.72	11.1	2.0	2.1	5.5	41
OMEX-100L-6	1.5	2.0	3.8	3.6	3.5	960	79.8	0.75	15.2	2.0	2.1	5.5	45
OMEX-112M-6	2.2	3.0	5.4	5.1	4.9	964	81.8	0.76	21.9	2.0	2.1	6.5	57
OMEX-132S-6	3	4.0	7.2	6.8	6.6	965	83.3	0.76	29.7	2.1	2.1	6.5	84
OMEX-132M1-6	4	5.5	9.4	9.0	8.6	965	84.6	0.76	39.6	2.1	2.1	6.5	92
OMEX-132M2-6	5.5	7.5	12.6	12.0	11.5	970	86.0	0.76	54.4	2.1	2.1	6.5	104
OMEX-160M-6	7.5	10	16.7	15.9	15.3	970	87.2	0.77	73.8	2.0	2.1	6.5	171
OMEX-160L-6	11	15	24.8	23.5	22.7	975	88.7	0.78	108	2.0	2.1	6.5	180
OMEX-180L-6	15	20	31.4	29.8	28.7	980	89.7	0.81	147	2.0	2.1	7.0	230
OMEX-200L1-6	18.5	25	38.3	36.4	35.1	980	90.4	0.81	180	2.1	2.1	7.0	309
OMEX-200L2-6	22	30	44.3	42.0	40.5	980	90.9	0.83	214	2.1	2.1	7.0	320
OMEX-225M-6	30	40	59.2	56.2	54.2	980	91.7	0.84	292	2.0	2.1	7.0	364
OMEX-250M-6	37	50	70.8	67.3	64.8	980	92.2	0.86	361	2.1	2.1	7.0	535
OMEX-280S-6	45	60	85.8	81.5	78.5	980	92.7	0.86	439	2.1	2.0	7.0	643
OMEX-280M-6	55	75	104	99.2	95.6	980	93.1	0.86	536	2.1	2.0	7.0	735
OMEX-315S-6	75	100	141	134	129	985	93.7	0.86	727	2.0	2.0	7.0	1095
OMEX-315M-6	90	120	169	160	155	985	94.0	0.86	873	2.0	2.0	7.0	1153
OMEX-315L1-6	110	150	206	196	189	985	94.3	0.86	1066	2.0	2.0	6.7	1330
OMEX-315L2-6	132	180	243	231	223	985	94.6	0.87	1280	2.0	2.0	6.7	1485
OMEX-355S-6	160	220	291	277	267	990	94.8	0.88	1543	1.9	2.0	6.7	1610
OMEX-355M1-6	185	250	336	321	310	990	95.0	0.88	1785	1.9	2.0	6.7	1750
OMEX-355M2-6	200	270	363	345	333	990	95.0	0.88	1929	1.9	2.0	6.7	1770
OMEX-355L1-6	220	300	401	381	367	990	95.0	0.88	2122	1.9	2.0	6.7	1800
OMEX-355L2-6	250	340	454	432	416	990	95.0	0.88	2411	1.9	2.0	6.7	1850

Safe and efficient motor solution providers and manufactures

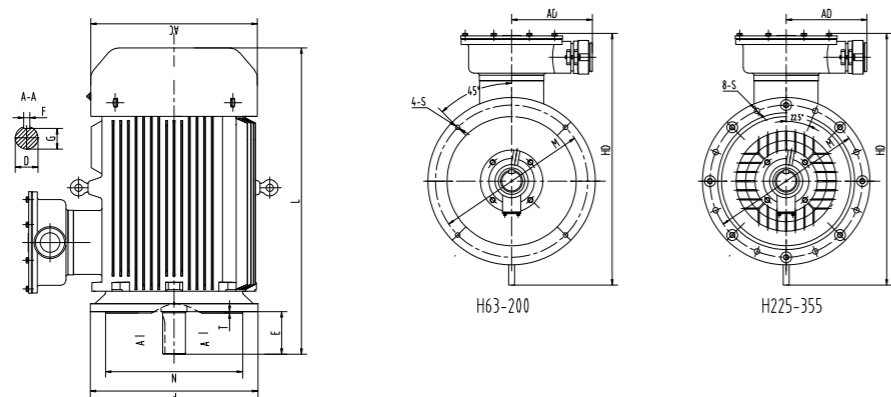
Frame	output (kW)		Rated Current			Speed r/min	Eff % η	Power Factor Φ	Rated torque Tn(N.m)	locked rotor torque Rated torque Tst/Tn	Max torque Rated torque Tmax/Tn	locked rotor current rated current Ist/In	Weight kg
	KW	HP	380V	400V	415V								
Synchronous speed 750rpm													
OMEX-80M1-8	0.18	0.25	0.88	0.84	0.8	650	51.0	0.61	2.6	1.8	1.9	3.3	20
OMEX-80M2-8	0.25	0.37	1.15	1.1	1.06	650	54.0	0.61	3.7	1.8	1.9	3.3	22
OMEX-90S-8	0.37	0.5	1.49	1.41	1.36	660	62.0	0.61	5.4	1.8	1.9	4.0	28
OMEX-90L-8	0.55	0.75	2.17	2.07	1.99	660	63.0	0.61	8.0	1.8	2.0	4.0	30
OMEX-100L1-8	0.75	1.0	2.4	2.28	2.19	690	71.0	0.67	10.4	1.8	2.0	4.0	40
OMEX-100L2-8	1.1	1.5	3.32	3.15	3.04	690	73.0	0.69	15.2	1.8	2.0	5.0	46
OMEX-112M-8	1.5	2.2	4.40	4.18	4.03	700	75.0	0.69	20.5	1.8	2.0	5.0	57
OMEX-132S-8	2.2	3.0	6.04	5.73	5.53	710	78.0	0.71	29.6	1.8	2.0	6.0	83
OMEX-132M-8	3	4.0	7.90	7.51	7.24	710	79.0	0.73	40.4	1.8	2.0	6.0	95
OMEX-160M1-6	4	5.5	10.3	9.8	9.4	720	81.0	0.73	53.1	1.9	2.0	6.0	158
OMEX-160M2-6	5.5	7.5	13.6	12.9	12.5	720	83.0	0.74	73.0	2.0	2.0	6.0	180
OMEX-160L-8	7.5	10	17.8	16.9	16.3	720	85.5	0.75	99.5	2.0	2.0	6.0	181
OMEX-180L-8	11	15	25.1	23.9	23.0	730	87.5	0.76	144	2.0	2.0	6.6	228
OMEX-200L-8	15	20	34.1	32.4	31.2	730	88.0	0.76	196	2.0	2.0	6.6	335
OMEX-225S-8	18.5	25	41.1	39.0	37.6	730	90.0	0.76	242	1.9	2.0	6.6	371
OMEX-225M-8	22	30	47.4	45.0	43.3	730	90.5	0.78	288	1.9	2.0	6.6	398
OMEX-250M-8	30	40	63.4	60.2	58.1	735	91.0	0.79	390	1.9	2.0	6.6	522
OMEX-280S-8	37	50	77.8	73.9	71.2	735	91.5	0.79	481	1.9	2.0	6.6	626
OMEX-280M-8	45	60	94.1	89.4	86.1	735	92.0	0.79	585	1.9	2.0	6.6	722
OMEX-315S-8	55	75	111	106	102	735	92.8	0.81	715	1.8	2.0	6.6	955
OMEX-315M-8	75	100	151	144	139	735	93.0	0.81	975	1.8	2.0	6.6	1160
OMEX-315L1-8	90	120	178	169	163	740	93.8	0.82	1162	1.8	2.0	6.6	1238
OMEX-315L2-8	110	150	217	206	199	740	94.0	0.82	1420	1.8	2.0	6.4	1362
OMEX-355S-8	132	180	261	248	239	740	94.0	0.82	1704	1.8	2.0	6.4	1620
OMEX-355M-8	160	220	315	299	288	740	94.2	0.82	2065	1.8	2.0	6.4	1710
OMEX-355L1-8	185	250	362	344	332	740	94.5	0.82	2388	1.8	2.0	6.4	1900
OMEX-355L2-8	200	270	387	368	355	740	94.5	0.82	2581	1.8	2.0	6.4	2000
Synchronous speed 600rpm													
OMEX-315S-10	45	60	99.6	94.7	91.2	590	91.5	0.75	728	1.5	2.0	830	1042
OMEX-315M-10	75	75	121	115	111	590	92.0	0.75	890	1.5	2.0	940	1157
OMEX-315L1-10	75	100	162	154	148	590	92.5	0.76	1214	1.5	2.0	1070	1310
OMEX-315L2-10	90	120	191	181	175	590	93.0	0.77	1457	1.5	2.0	1150	1385
OMEX-355M1-10	110	150	230	218	211	590	93.2	0.78	1781	1.3	2.0	1660	1500
OMEX-355M2-10	132	180	275	261	252	590	93.5	0.78	2137	1.3	2.0	1780	1600
OMEX-355L1-10	160	220	333	317	305	590	93.5	0.78	2590	1.3	2.0	1950	1700
OMEX-355L2-10	185	250	385	366	353	590	93.5	0.78	2995	1.3	2.0	2100	1800



Mounting and overall dimensions

Frame with foundation, cover without flange(B3)

Frame	Pole	Mounting dimension										Over all dimension									
		A	B	C	D	E	F	G	H	K	AB	AC	AD	BB	HD	L					
80M	2-8	125	100	50	19	40	6	15.5	80	10	165	165	180	130	320	330					
90S	2-8	140		56	24	50	8	20	90		180	180		130	350	360					
90L	2-8		125	56	24	50		20	90		180	180		155	385						
100L	2-8	160	140	63	28	60		24	100	12	200	205	200	176	400	440					
112M	2-8	190		70	38	80	10		33		132	245		230	180	420	460				
132S	2-8	216	178	89	38	80	10		33		132	280		270	200	190	450	510			
132M	2-8		216	178	89	38	80	10	33	132	280	270	200	230	550						
160M	2-8	254	210	108	42	110	12	37	160	15	330	325	220	252	520	670					
160L	2-8		254											302		710					
180M	2-8	279	241	121	48									14	42.5	180	15	355	360	220	311
180L	2-8		279			349	750														
200L	2-8	318	305	133	55	16	49	200	19	390	400	250	366								645
225S	4-8	356	286	60	140								18	53	19	435	450	250	355	690	
225M	2		311	149	55								110	16					49		225
225M	4-8	356	311	149	55	110	16	49	225	380	890										
250M	2	406	349	168	65	18	58	250	24	490	500	300	420	730	945						
250M	4-8												406			349	168	65	250	420	
280S	2	457	368	190	75								20	67.5	280	24	545	560	300	438	810
280S	4-8					457	368	190	75	280	438										
280M	2	457	419	190	65	18	58	280	24	545	560	300								493	1060
280M	4-8												457	419	190	65	280	493			
315S	2	508	406	216	65								18	58	315	28	640	630	400	550	1020
315S	4-10					508	406	216	65	315	550										
315M	2	508	457	216	65	140	18	58	315	640	630	400								680	1350
315M	4-10												508	457	216	65	315	680			
315L	2	508	508	216	65								140	18	58	28	640	630	400	680	1490
315L	4-10					508	508	216	65	28	680										
355S	2	610	500	254	75	140	20	67.5	355	740	750	500								636	1080
355S	4-10												610	500	254	75	355	636			
355M	2	610	560	254	75								140	20	67.5	355	740	750	500	696	1650
355M	4-10					610	560	254	75	355	696										
355L	2	630	630	254	75	140	20	67.5	28	740	750	500								766	1750
355L	4-10												630	630	254	75	28	766			
355L	4-10	630	630	254	95								170	25	86	355	740	750	500	766	1750



Frame without feet, end-shield with flange (V1)

Frame	Poles	Mounting dimension										Flange holes	Over all dimension		
		D	E	F	G	M	N	P	R	S	T		AC	AD	L
80M	2-8	19	40	6	15.5	165	130	200	0	12	3.5	4	165	180	330
90S	2-8	24	50	8	20								360		
90L	2-8				205	385									
100L	2-8	28	60	24	215	180	250	0	15	4	4	230	200	440	
112M	2-8											270		460	
132S	2-8	38	80	10	33	265	230	300	0	19	5	4	270	220	510
132M	2-8												550		
160M	2-8	42	110	12	37	300	250	350	0	19	5	4	325	220	670
160L	2-8												710		
180M	2-8	48	140	14	42.5	350	300	400	0	19	5	4	360	250	730
180L	2-8												750		
200L	2-8	55	110	16	49	400	350	450	0	19	5	4	400	250	805
225S	4-8	60		18	53								865		
225M	2	55	16	49	400	350	450	0	19	5	4	4	250	860	
	4-8	60	18	53										890	
250M	2	65	140	18	58	500	450	550	0	19	5	4	300	945	
	4-8													500	
280S	2	75	140	20	67.5	500	450	550	0	19	5	4	300	1010	
	4-8													560	
280M	2	75	140	18	58	500	450	550	0	19	5	4	300	1060	
	4-8													560	
315S	2	80	170	22	71	600	550	660	0	24	6	8	400	1320	
	4-10													630	1350
315M	2	80	170	22	71	600	550	660	0	24	6	8	400	1380	
	4-10													630	1490
315L	2	80	170	22	71	600	550	660	0	24	6	8	400	1520	
	4-10													630	1520
355S	2	95	170	25	86	740	680	800	0	24	6	8	500	1570	
	4-10													750	1650
355M	2	95	170	25	86	740	680	800	0	24	6	8	500	1650	
	4-10													750	1650
355L	2	95	170	25	86	740	680	800	0	24	6	8	500	1750	
	4-10													750	1750